



Location: CMA1b - Oil St Community Liaison Centre

Report on 24-hour TSP monitoring

Action Level ($\mu\text{g}/\text{m}^3$) - 176.7

Limit Level ($\mu\text{g}/\text{m}^3$) - 260

Date	Sampling Time	Weather Condition	Filter paper no.	Filter Weight, g		Elapse Time, hr		Sampling Time, hr	Flow Rate, m^3/min			Total Volume, m^3	TSP Level, $\mu\text{g}/\text{m}^3$
				Initial	Final	Initial	Final		Initial, Q_{in}	Final, Q_{out}	Average		
30-Nov-11	8:00	Fine	001638	2.7561	2.9760	128.08	152.08	24.00	1.19	1.19	1.19	1714	128
6-Dec-11	8:00	Fine	001708	2.7453	2.8985	155.08	179.08	24.00	1.22	1.21	1.21	1749	88
12-Dec-11	8:00	Fine	001698	2.7617	3.0281	182.08	206.08	24.00	1.20	1.20	1.20	1727	154
17-Dec-11	8:00	Fine	001726	2.7825	3.0740	209.07	233.09	24.02	1.20	1.20	1.20	1732	168
23-Dec-11	8:00	Fine	001793	2.7520	3.0197	236.08	260.08	24.00	1.20	1.21	1.20	1733	154

Report on 1-hour TSP monitoring

Action Level ($\mu\text{g}/\text{m}^3$) - 320.1

Limit Level ($\mu\text{g}/\text{m}^3$) - 500

Date	Sampling Time	Weather Condition	Filter paper no.	Filter Weight, g		Elapse Time, hr		Sampling Time, hr	Flow Rate, m^3/min			Total Volume, m^3	TSP Level, $\mu\text{g}/\text{m}^3$
				Initial	Final	Initial	Final		Initial, Q_{in}	Final, Q_{out}	Average		
1-Dec-11	8:45	Fine	001682	2.7235	2.7347	152.08	153.08	1.00	1.33	1.33	1.33	80	141
1-Dec-11	10:40	Fine	001714	2.7651	2.7766	153.08	154.08	1.00	1.37	1.37	1.37	82	139
1-Dec-11	13:00	Fine	001712	2.7567	2.7737	154.08	155.08	1.00	1.37	1.37	1.37	82	206
7-Dec-11	8:55	Fine	001652	2.7541	2.7615	179.08	180.08	1.00	1.32	1.32	1.32	79	93
7-Dec-11	10:00	Fine	001653	2.7372	2.7437	180.08	181.08	1.00	1.37	1.37	1.37	82	79
7-Dec-11	13:00	Fine	001655	2.7677	2.7885	181.08	182.08	1.00	1.34	1.34	1.34	81	258
13-Dec-11	13:00	Fine	001668	2.7685	2.7747	206.07	207.07	1.00	1.20	1.20	1.20	72	86
13-Dec-11	14:00	Fine	001729	2.7633	2.7694	207.07	208.07	1.00	1.24	1.24	1.24	75	82
13-Dec-11	15:00	Fine	001727	2.7676	2.7746	208.07	209.07	1.00	1.24	1.24	1.24	75	94
19-Dec-11	13:00	Fine	001741	2.7589	2.7741	233.09	234.09	1.00	1.20	1.20	1.20	72	211
19-Dec-11	14:00	Fine	001796	2.7566	2.7712	234.09	235.09	1.00	1.25	1.25	1.25	75	195
19-Dec-11	15:00	Fine	001794	2.7497	2.7649	235.07	236.07	1.00	1.25	1.25	1.25	75	203
24-Dec-11	8:50	Fine	001749	2.7532	2.7755	260.08	261.08	1.00	1.25	1.25	1.25	75	297
24-Dec-11	10:55	Fine	001777	2.7841	2.7962	261.08	262.08	1.00	1.21	1.21	1.21	72	167
24-Dec-11	13:00	Fine	001813	2.7708	2.7890	262.08	263.08	1.00	1.25	1.25	1.25	75	242



Location: CMA2a - Causeway Bay Community Centre

Report on 24-hour TSP monitoring

Action Level ($\mu\text{g}/\text{m}^3$) - 169.5

Limit Level ($\mu\text{g}/\text{m}^3$) - 260

Date	Sampling Time	Weather Condition	Filter paper no.	Filter Weight, g		Elapse Time, hr		Sampling Time, hr	Flow Rate, m^3/min			Total Volume, m^3	TSP Level, $\mu\text{g}/\text{m}^3$
				Initial	Final	Initial	Final		Initial, Q_{si}	Final, Q_{sf}	Average		
30-Nov-11	8:00	Fine	001639	2.7363	2.9248	9954.86	9978.86	24.00	1.33	1.34	1.33	1921	98
6-Dec-11	8:00	Fine	001684	2.7682	2.9096	9981.86	10005.86	24.00	1.42	1.41	1.41	2035	69
13-Dec-11*	15:00	Fine	001728	2.7705	2.9945	10011.88	10035.88	24.00	1.43	1.42	1.42	2050	109
17-Dec-11	8:00	Fine	001759	2.7600	3.0628	10035.90	10059.90	24.00	1.45	1.45	1.45	2092	145
23-Dec-11	8:00	Fine	001812	2.7638	3.0468	10065.90	10089.90	24.00	1.43	1.43	1.43	2056	138

*The 24-hr TSP for CMA2a has been re-scheduled to 13 Dec 2011 from 12 Dec 2011 due to the power failure

Report on 1-hour TSP monitoring

Action Level ($\mu\text{g}/\text{m}^3$) - 323.4

Limit Level ($\mu\text{g}/\text{m}^3$) - 500

Date	Sampling Time	Weather Condition	Filter paper no.	Filter Weight, g		Elapse Time, hr		Sampling Time, hr	Flow Rate, m^3/min			Total Volume, m^3	TSP Level, $\mu\text{g}/\text{m}^3$
				Initial	Final	Initial	Final		Initial, Q_{si}	Final, Q_{sf}	Average		
1-Dec-11	8:35	Fine	001681	2.7657	2.7756	9978.86	9979.86	1.00	1.39	1.39	1.39	83	119
1-Dec-11	10:30	Fine	001715	2.7763	2.7901	9979.86	9980.86	1.00	1.39	1.39	1.39	83	165
1-Dec-11	13:00	Fine	001713	2.7622	2.7758	9980.86	9981.86	1.00	1.42	1.42	1.42	85	160
7-Dec-11	8:46	Fine	001651	2.7507	2.7563	10005.88	10006.88	1.00	1.41	1.41	1.41	85	66
7-Dec-11	9:51	Fine	001685	2.7585	2.7672	10006.88	10007.88	1.00	1.41	1.41	1.41	85	103
7-Dec-11	10:57	Fine	001654	2.7552	2.7680	10007.88	10008.88	1.00	1.41	1.41	1.41	85	151
13-Dec-11	8:00	Fine	001699	2.7486	2.7685	10008.88	10009.88	1.00	1.39	1.39	1.39	84	238
13-Dec-11	9:45	Fine	001723	2.7768	2.7901	10009.88	10010.88	1.00	1.39	1.39	1.39	84	159
13-Dec-11	13:10	Fine	001730	2.7872	2.7963	10010.88	10011.88	1.00	1.42	1.42	1.42	85	107
19-Dec-11	8:00	Fine	001798	2.7551	2.7698	10059.90	10060.90	1.00	1.40	1.40	1.40	84	175
19-Dec-11	9:45	Fine	001797	2.7477	2.7609	10060.90	10061.90	1.00	1.40	1.40	1.40	84	157
19-Dec-11	13:10	Fine	001795	2.7681	2.7804	10061.90	10062.90	1.00	1.43	1.43	1.43	86	144
24-Dec-11	8:41	Fine	001792	2.7430	2.7641	10062.90	10063.90	1.00	1.46	1.46	1.46	87	241
24-Dec-11	10:55	Fine	001788	2.7478	2.7607	10063.90	10064.90	1.00	1.27	1.27	1.27	76	169
24-Dec-11	13:00	Fine	001814	2.7867	2.8045	10064.90	10065.90	1.00	1.46	1.46	1.46	87	204



Location: CMA3a - CWB PRE Site Office Area

Report on 24-hour TSP monitoring
 Action Level ($\mu\text{g}/\text{m}^3$) - 171
 Limit Level ($\mu\text{g}/\text{m}^3$) - 260

Date	Sampling Time	Weather Condition	Filter paper no.	Filter Weight, g		Elapse Time, hr		Sampling Time, hr	Flow Rate, m^3/min			Total Volume, m^3	TSP Level, $\mu\text{g}/\text{m}^3$
				Initial	Final	Initial	Final		Initial, Q_{si}	Final, Q_{sf}	Average		
30-Nov-11	8:00	Fine	001608	2.7548	3.0437	10522.41	10546.41	24.00	1.44	1.45	1.44	2076	139
6-Dec-11	8:00	Fine	001551	2.7722	2.9455	10549.41	10573.41	24.00	1.52	1.52	1.52	2194	79
12-Dec-11	8:00	Fine	001680	2.7591	3.0525	10576.41	10600.41	24.00	1.53	1.53	1.53	2207	133
17-Dec-11	8:00	Fine	001738	2.7456	3.1088	10603.41	10627.41	24.00	1.53	1.51	1.52	2191	166
23-Dec-11	8:00	Fine	001735	2.7733	3.1101	10630.42	10654.42	24.00	1.53	1.54	1.54	2214	152

Report on 1-hour TSP monitoring
 Action Level ($\mu\text{g}/\text{m}^3$) - 311.3
 Limit Level ($\mu\text{g}/\text{m}^3$) - 500

Date	Sampling Time	Weather Condition	Filter paper no.	Filter Weight, g		Elapse Time, hr		Sampling Time, hr	Flow Rate, m^3/min			Total Volume, m^3	TSP Level, $\mu\text{g}/\text{m}^3$
				Initial	Final	Initial	Final		Initial, Q_{si}	Final, Q_{sf}	Average		
1-Dec-11	10:10	Fine	001630	2.7789	2.8003	10546.41	10547.41	1.00	1.47	1.47	1.47	88	242
1-Dec-11	13:00	Fine	001683	2.7479	2.7606	10547.41	10548.41	1.00	1.39	1.39	1.39	84	152
1-Dec-11	14:35	Fine	001553	2.7698	2.7892	10548.41	10549.41	1.00	1.50	1.50	1.50	90	216
7-Dec-11	10:20	Fine	001700	2.7506	2.7628	10573.41	10574.41	1.00	1.47	1.47	1.47	88	139
7-Dec-11	14:00	Fine	001676	2.7748	2.7935	10574.41	10575.41	1.00	1.47	1.47	1.47	88	213
7-Dec-11	15:15	Fine	001678	2.7739	2.7958	10575.41	10576.41	1.00	1.39	1.39	1.39	83	263
13-Dec-11	9:24	Fine	001662	2.7587	2.7725	10600.41	10601.41	1.00	1.48	1.48	1.48	89	156
13-Dec-11	10:54	Fine	001666	2.7879	2.8012	10601.41	10602.41	1.00	1.40	1.40	1.40	84	159
13-Dec-11	13:00	Fine	001669	2.7836	2.7950	10602.41	10603.41	1.00	1.50	1.50	1.50	90	127
19-Dec-11	8:25	Fine	001799	2.7649	2.7857	10627.41	10628.41	1.00	1.48	1.48	1.48	89	234
19-Dec-11	13:00	Fine	001613	2.7465	2.7624	10628.41	10629.41	1.00	1.40	1.40	1.40	84	189
19-Dec-11	14:05	Fine	001612	2.7565	2.7728	10629.41	10630.41	1.00	1.51	1.51	1.51	91	180
24-Dec-11	9:55	Fine	001775	2.7813	2.8050	10654.42	10655.42	1.00	1.49	1.49	1.49	89	266
24-Dec-11	11:00	Fine	001787	2.7524	2.7756	10655.42	10656.42	1.00	1.41	1.41	1.41	84	275
24-Dec-11	13:00	Fine	001805	2.7560	2.7743	10656.42	10657.42	1.00	1.51	1.51	1.51	91	202



Location: CMA4a - SPCA

Report on 24-hour TSP monitoring

Action Level ($\mu\text{g}/\text{m}^3$) - 171.2
Limit Level ($\mu\text{g}/\text{m}^3$) - 260

Date	Sampling Time	Weather Condition	Filter paper no.	Filter Weight, g		Elapse Time, hr		Sampling Time, hr	Flow Rate, m^3/min			Total Volume, m^3	TSP Level, $\mu\text{g}/\text{m}^3$
				Initial	Final	Initial	Final		Initial, Q_{si}	Final, Q_{sf}	Average		
30-Nov-11	8:00	Fine	001607	2.7610	2.9639	14173.30	14197.30	24.00	1.15	1.16	1.15	1662	122
6-Dec-11	8:00	Fine	001552	2.7672	2.8791	14200.30	14224.30	24.00	1.16	1.15	1.15	1663	67
12-Dec-11	8:00	Fine	001679	2.7582	2.9618	14227.30	14251.30	24.00	1.16	1.16	1.16	1675	122
17-Dec-11	8:00	Fine	001766	2.7771	3.0328	14254.30	14278.30	24.00	1.16	1.17	1.16	1677	152
23-Dec-11	8:00	Fine	001736	2.7683	2.9677	14281.31	14305.31	24.00	1.16	1.17	1.17	1680	119

Report on 1-hour TSP monitoring

Action Level ($\mu\text{g}/\text{m}^3$) - 312.5
Limit Level ($\mu\text{g}/\text{m}^3$) - 500

Date	Sampling Time	Weather Condition	Filter paper no.	Filter Weight, g		Elapse Time, hr		Sampling Time, hr	Flow Rate, m^3/min			Total Volume, m^3	TSP Level, $\mu\text{g}/\text{m}^3$
				Initial	Final	Initial	Final		Initial, Q_{si}	Final, Q_{sf}	Average		
1-Dec-11	9:55	Fine	001631	2.7609	2.7706	14197.30	14198.30	1.00	1.16	1.16	1.16	69	140
1-Dec-11	13:00	Fine	001711	2.7419	2.7519	14198.30	14199.30	1.00	1.16	1.16	1.16	69	144
1-Dec-11	14:22	Fine	001554	2.7755	2.7839	14199.30	14200.30	1.00	1.16	1.16	1.16	69	121
7-Dec-11	10:05	Fine	001701	2.7508	2.7574	14224.30	14225.30	1.00	1.15	1.15	1.15	69	95
7-Dec-11	13:50	Fine	001675	2.7849	2.7984	14225.30	14226.30	1.00	1.15	1.15	1.15	69	195
7-Dec-11	15:07	Fine	001677	2.7542	2.7684	14226.30	14227.30	1.00	1.15	1.15	1.15	69	205
13-Dec-11	9:38	Fine	001663	2.7497	2.7594	14251.30	14252.30	1.00	1.16	1.16	1.16	70	139
13-Dec-11	10:40	Fine	001664	2.7752	2.7835	14252.30	14253.30	1.00	1.16	1.16	1.16	70	119
13-Dec-11	15:07	Fine	001671	2.7537	2.7620	14253.30	14254.30	1.00	1.16	1.16	1.16	70	119
19-Dec-11	8:15	Fine	001800	2.7757	2.7858	14278.30	14279.30	1.00	1.17	1.19	1.18	71	143
19-Dec-11	13:00	Fine	001661	2.7386	2.7468	14279.30	14280.30	1.00	1.19	1.19	1.19	71	115
19-Dec-11	14:24	Fine	001611	2.7490	2.7583	14280.30	14281.30	1.00	1.19	1.19	1.19	71	130
24-Dec-11	9:53	Fine	001790	2.7675	2.7745	14305.31	14306.31	1.00	1.17	1.17	1.17	70	100
24-Dec-11	11:00	Fine	001786	2.7699	2.7800	14306.31	14307.31	1.00	1.17	1.17	1.17	70	144
24-Dec-11	13:00	Fine	001806	2.7680	2.7775	14307.31	14308.31	1.00	1.17	1.17	1.17	70	136



Location: CMA5a - Children Garden opposite to Pedestrian Plaza

Report on 24-hour TSP monitoring

Action Level ($\mu\text{g}/\text{m}^3$) - 181
 Limit Level ($\mu\text{g}/\text{m}^3$) - 260

Date	Sampling Time	Weather Condition	Filter paper no.	Filter Weight, g		Elapse Time, hr		Sampling Time, hr	Flow Rate, m^3/min			Total Volume, m^3	TSP Level, $\mu\text{g}/\text{m}^3$
				Initial	Final	Initial	Final		Initial, Q_{si}	Final, Q_{sf}	Average		
30-Nov-11	8:00	Fine	001604	2.7509	2.9644	15156.17	15180.17	24.00	1.18	1.19	1.18	1703	125
9-Dec-11	8:00	Fine	001658	2.7405	2.9017	15196.82	15220.89	24.07	1.23	1.23	1.23	1770	91
12-Dec-11	8:00	Fine	001657	2.7503	2.9596	15220.89	15244.89	24.00	1.22	1.22	1.22	1760	119
17-Dec-11	8:00	Fine	001765	2.7708	3.0481	15247.89	15271.89	24.00	1.22	1.23	1.22	1764	157
23-Dec-11	8:00	Fine	001733	2.7579	2.9812	15274.90	15298.90	24.00	1.22	1.23	1.23	1767	126

Report on 1-hour TSP monitoring

Action Level ($\mu\text{g}/\text{m}^3$) - 332
 Limit Level ($\mu\text{g}/\text{m}^3$) - 500

Date	Sampling Time	Weather Condition	Filter paper no.	Filter Weight, g		Elapse Time, hr		Sampling Time, hr	Flow Rate, m^3/min			Total Volume, m^3	TSP Level, $\mu\text{g}/\text{m}^3$
				Initial	Final	Initial	Final		Initial, Q_{si}	Final, Q_{sf}	Average		
1-Dec-11	8:10	Fine	001716	2.7526	2.7630	15180.17	15181.17	1.00	1.22	1.22	1.22	73	143
1-Dec-11	9:40	Fine	001632	2.7530	2.7654	15181.17	15182.17	1.00	1.22	1.22	1.22	73	170
1-Dec-11	13:00	Fine	001650	2.7505	2.7618	15182.17	15183.17	1.00	1.22	1.22	1.22	73	155
7-Dec-11	8:15	Fine	001703	2.7445	2.7507	15193.82	15194.82	1.00	1.21	1.21	1.21	73	85
7-Dec-11	9:20	Fine	001686	2.7525	2.7594	15194.82	15195.82	1.00	1.21	1.21	1.21	73	95
7-Dec-11	13:00	Fine	001656	2.7541	2.7677	15195.82	15196.82	1.00	1.21	1.21	1.21	73	187
13-Dec-11	10:57	Fine	001752	2.7475	2.7589	15244.89	15245.89	1.00	1.22	1.22	1.22	73	156
13-Dec-11	13:00	Fine	001769	2.7825	2.7894	15245.89	15246.89	1.00	1.22	1.22	1.22	73	94
13-Dec-11	14:10	Fine	001767	2.7688	2.7821	15246.89	15247.89	1.00	1.22	1.22	1.22	73	182
19-Dec-11	8:00	Fine	001739	2.7470	2.7564	15271.89	15272.89	1.00	1.23	1.23	1.23	74	128
19-Dec-11	9:30	Fine	001743	2.7533	2.7633	15272.89	15273.89	1.00	1.23	1.23	1.23	74	136
19-Dec-11	10:48	Fine	001744	2.7428	2.7529	15273.89	15274.89	1.00	1.23	1.23	1.23	74	137
24-Dec-11	8:03	Fine	001771	2.7776	2.7923	15298.90	15299.90	1.00	1.23	1.23	1.23	74	199
24-Dec-11	9:08	Fine	001773	2.7663	2.7811	15299.90	15300.90	1.00	1.23	1.23	1.23	74	201
24-Dec-11	10:10	Fine	001789	2.7541	2.7693	15300.90	15301.90	1.00	1.23	1.23	1.23	74	206



Location: MA1e - International Finance Centre (Eastern Wing)

Report on 24-hour TSP monitoring

Action Level ($\mu\text{g}/\text{m}^3$) - 173.4

Limit Level ($\mu\text{g}/\text{m}^3$) - 260

Date	Sampling Time	Weather Condition	Filter paper no.	Filter Weight, g		Elapse Time, hr		Sampling Time, hr	Flow Rate, m^3/min			Total Volume, m^3	TSP Level, $\mu\text{g}/\text{m}^3$
				Initial	Final	Initial	Final		Initial, Q_{si}	Final, Q_{sf}	Average		
30-Nov-11	8:00	Fine	001562	2.7517	2.9782	7796.25	7820.25	24.00	1.23	1.24	1.24	1782	127
6-Dec-11	8:00	Fine	001647	2.7419	2.8602	7823.25	7847.25	24.00	1.24	1.24	1.24	1783	66
12-Dec-11	8:00	Fine	001674	2.7716	3.0110	7851.25	7875.25	24.00	1.27	1.27	1.27	1829	131
17-Dec-11	8:00	Fine	001721	2.7725	3.0362	7905.27	7929.27	24.00	1.27	1.27	1.27	1833	144
23-Dec-11	8:00	Fine	001417	2.7709	3.0282	7929.27	7953.27	24.00	1.27	1.28	1.27	1835	140

Report on 1-hour TSP monitoring

Action Level ($\mu\text{g}/\text{m}^3$) - 325.1

Limit Level ($\mu\text{g}/\text{m}^3$) - 500

Date	Sampling Time	Weather Condition	Filter paper no.	Filter Weight, g		Elapse Time, hr		Sampling Time, hr	Flow Rate, m^3/min			Total Volume, m^3	TSP Level, $\mu\text{g}/\text{m}^3$
				Initial	Final	Initial	Final		Initial, Q_{si}	Final, Q_{sf}	Average		
1-Dec-11	8:24	Fine	001641	2.7647	2.7748	7820.25	7821.25	1.00	1.26	1.26	1.26	76	133
1-Dec-11	9:29	Fine	001643	2.7712	2.7808	7821.25	7822.25	1.00	1.26	1.26	1.26	76	127
1-Dec-11	10:32	Fine	001645	2.7604	2.7711	7822.25	7823.25	1.00	1.26	1.26	1.26	76	141
7-Dec-11	8:33	Fine	001609	2.7683	2.7748	7847.25	7848.25	1.00	1.24	1.24	1.24	74	88
7-Dec-11	11:00	Fine	001594	2.7791	2.7865	7848.25	7849.25	1.00	1.24	1.24	1.24	74	100
7-Dec-11	13:00	Fine	001596	2.7629	2.7729	7849.25	7850.25	1.00	1.24	1.24	1.24	74	135
13-Dec-11	8:26	Fine	001692	2.7577	2.7688	7902.27	7903.27	1.00	1.27	1.27	1.27	76	146
13-Dec-11	9:44	Fine	001690	2.7697	2.7815	7903.27	7904.27	1.00	1.27	1.27	1.27	76	155
13-Dec-11	10:47	Fine	001688	2.7280	2.7434	7904.27	7905.27	1.00	1.27	1.27	1.27	76	203
19-Dec-11	8:26	Fine	001672	2.7680	2.7835	7929.27	7930.27	1.00	1.27	1.27	1.27	76	203
19-Dec-11	9:44	Fine	001696	2.7547	2.7643	7930.27	7931.27	1.00	1.27	1.27	1.27	76	126
19-Dec-11	10:47	Fine	001617	2.7687	2.7771	7931.27	7932.27	1.00	1.27	1.27	1.27	76	110
24-Dec-11	8:32	Fine	001732	2.7518	2.7656	7953.27	7954.27	1.00	1.28	1.28	1.28	77	180
24-Dec-11	9:36	Fine	001693	2.7429	2.7574	7954.27	7955.27	1.00	1.28	1.28	1.28	77	189
24-Dec-11	10:40	Fine	001801	2.7548	2.7661	7955.27	7956.27	1.00	1.28	1.28	1.28	77	148



Location: MA1w - International Finance Centre (Western Wing)

Report on 24-hour TSP monitoring

Action Level ($\mu\text{g}/\text{m}^3$) - 173.4

Limit Level ($\mu\text{g}/\text{m}^3$) - 260

Date	Sampling Time	Weather Condition	Filter paper no.	Filter Weight, g		Elapse Time, hr		Sampling Time, hr	Flow Rate, m^3/min			Total Volume, m^3	TSP Level, $\mu\text{g}/\text{m}^3$
				Initial	Final	Initial	Final		Initial, Q_{si}	Final, Q_{sf}	Average		
30-Nov-11	8:00	Fine	001561	2.7673	2.9924	10973.66	10997.66	24.00	1.41	1.42	1.42	2042	110
6-Dec-11	8:00	Fine	001648	2.7381	2.8698	11000.66	11024.66	24.00	1.42	1.42	1.42	2043	64
12-Dec-11	8:00	Fine	001673	2.7635	3.0033	11027.66	11051.66	24.00	1.48	1.48	1.48	2130	113
17-Dec-11	8:00	Fine	001722	2.7761	3.0864	11054.66	11078.66	24.00	1.46	1.46	1.46	2099	148
23-Dec-11	8:00	Fine	001614	2.7611	3.0754	11081.67	11105.67	24.00	1.48	1.49	1.48	2137	147

Report on 1-hour TSP monitoring

Action Level ($\mu\text{g}/\text{m}^3$) - 325.1

Limit Level ($\mu\text{g}/\text{m}^3$) - 500

Date	Sampling Time	Weather Condition	Filter paper no.	Filter Weight, g		Elapse Time, hr		Sampling Time, hr	Flow Rate, m^3/min			Total Volume, m^3	TSP Level, $\mu\text{g}/\text{m}^3$
				Initial	Final	Initial	Final		Initial, Q_{si}	Final, Q_{sf}	Average		
1-Dec-11	8:32	Fine	001642	2.7396	2.7473	10997.66	10998.66	1.00	1.37	1.37	1.37	82	94
1-Dec-11	9:35	Fine	001644	2.7510	2.7585	10998.66	10999.66	1.00	1.30	1.30	1.30	78	96
1-Dec-11	10:38	Fine	001646	2.7794	2.7885	10999.66	11000.66	1.00	1.32	1.32	1.32	79	115
7-Dec-11	8:41	Fine	001610	2.7531	2.7591	11024.66	11025.66	1.00	1.44	1.44	1.44	86	69
7-Dec-11	10:00	Fine	001593	2.7756	2.7832	11025.66	11026.66	1.00	1.42	1.42	1.42	85	89
7-Dec-11	11:00	Fine	001595	2.7718	2.7803	11026.66	11027.66	1.00	1.42	1.42	1.42	85	100
13-Dec-11	13:50	Fine	001691	2.7430	2.7544	11051.66	11052.66	1.00	1.37	1.37	1.37	82	138
13-Dec-11	15:00	Fine	001689	2.7555	2.7739	11052.66	11053.66	1.00	1.50	1.50	1.50	90	204
13-Dec-11	16:10	Fine	001717	2.7767	2.7932	11053.66	11054.66	1.00	1.48	1.48	1.48	89	186
19-Dec-11	8:34	Fine	001670	2.7835	2.7978	11078.66	11079.66	1.00	1.48	1.48	1.48	89	161
19-Dec-11	9:49	Fine	001697	2.7394	2.7509	11079.66	11080.66	1.00	1.48	1.48	1.48	89	129
19-Dec-11	10:52	Fine	001616	2.7474	2.7574	11080.66	11081.66	1.00	1.48	1.48	1.48	89	112
24-Dec-11	8:40	Fine	001731	2.7631	2.7780	11105.67	11106.67	1.00	1.39	1.39	1.39	83	179
24-Dec-11	9:43	Fine	001695	2.7710	2.7850	11106.67	11107.67	1.00	1.31	1.31	1.31	79	178
24-Dec-11	10:46	Fine	001802	2.7609	2.7742	11107.67	11108.67	1.00	1.33	1.33	1.33	80	166



Location: CMA1b - Oil St Community Liaison Centre

Report on 24-hour TSP monitoring

Action Level ($\mu\text{g}/\text{m}^3$) - 176.7

Limit Level ($\mu\text{g}/\text{m}^3$) - 260

Date	Sampling Time	Weather Condition	Filter paper no.	Filter Weight, g		Elapse Time, hr		Sampling Time, hr	Flow Rate, m^3/min			Total Volume, m^3	TSP Level, $\mu\text{g}/\text{m}^3$
				Initial	Final	Initial	Final		Initial, Q_{in}	Final, Q_{out}	Average		
29-Dec-11	8:00	Fine	001811	2.7681	2.9791	263.08	287.08	24.00	1.24	1.24	1.24	1791	118
5-Jan-12*	16:10	Fine	001885	2.7904	2.9619	308.29	332.29	24.00	1.20	1.20	1.20	1726	99
11-Jan-12*	16:10	Fine	001751	2.7647	2.9508	335.29	359.29	24.00	1.20	1.20	1.20	1726	108
16-Jan-12	8:00	Fine	001900	2.7798	2.9485	359.31	383.31	24.00	1.22	1.22	1.22	1761	96
21-Jan-12*	15:30	Fine	002050	2.8146	2.9371	359.31	383.31	24.00	1.22	1.22	1.22	1763	69
27-Jan-12*	9:50	Fine	002006	2.7412	2.9324	414.12	438.12	24.00	1.20	1.20	1.20	1732	110

* Due to lack of electricity supply, the 24 hr-TSPs were rescheduled from 4, 10, 20 and 26 Jan 2012 to 5, 11, 21 and 27 Jan 2012

Report on 1-hour TSP monitoring

Action Level ($\mu\text{g}/\text{m}^3$) - 320.1

Limit Level ($\mu\text{g}/\text{m}^3$) - 500

Date	Sampling Time	Weather Condition	Filter paper no.	Filter Weight, g		Elapse Time, hr		Sampling Time, hr	Flow Rate, m^3/min			Total Volume, m^3	TSP Level, $\mu\text{g}/\text{m}^3$
				Initial	Final	Initial	Final		Initial, Q_{in}	Final, Q_{out}	Average		
30-Dec-11	8:50	Fine	001833	2.7686	2.7841	287.08	288.09	1.01	1.25	1.25	1.25	75	205
30-Dec-11	9:54	Fine	001831	2.7462	2.7596	288.09	289.09	1.00	1.20	1.15	1.17	70	190
30-Dec-11	13:00	Fine	001845	2.7614	2.7761	289.09	290.09	1.00	1.20	1.17	1.19	71	207
5-Jan-12	9:51	Fine	001756	2.7589	2.7714	305.29	306.29	1.00	1.20	1.17	1.19	71	176
5-Jan-12	13:00	Fine	001810	2.7554	2.7655	306.29	307.29	1.00	1.20	1.20	1.20	72	140
5-Jan-12	14:50	Fine	001915	2.7789	2.7871	307.29	308.29	1.00	1.20	1.20	1.20	72	114
11-Jan-12	8:58	Fine	001929	2.8030	2.8161	332.29	333.29	1.00	1.15	1.15	1.15	69	190
11-Jan-12	13:00	Fine	001932	2.7963	2.8072	333.29	334.29	1.00	1.15	1.17	1.16	70	156
11-Jan-12	14:40	Fine	001931	2.8059	2.8165	334.29	335.29	1.00	1.17	1.17	1.17	70	150
17-Jan-12	9:00	Fine	001867	2.7600	2.7826	383.31	384.31	1.00	1.25	1.25	1.25	75	302
17-Jan-12	10:55	Fine	001864	2.7486	2.7562	384.31	385.31	1.00	1.25	1.25	1.25	75	102
17-Jan-12	13:00	Fine	001941	2.8233	2.8324	385.31	386.31	1.00	1.13	1.01	1.07	64	142
21-Jan-12	10:50	Cloudy	002042	2.8000	2.8122	387.12	388.12	1.00	1.13	1.13	1.13	68	180
21-Jan-12	13:00	Cloudy	002045	2.7808	2.7892	388.12	389.12	1.00	1.10	1.10	1.10	66	127
21-Jan-12	14:03	Cloudy	002046	2.7982	2.8067	389.12	390.12	1.00	1.18	1.18	1.18	71	120
27-Jan-12	9:52	Cloudy	002008	2.7685	2.7790	438.12	439.12	1.00	1.20	1.20	1.20	72	146
27-Jan-12	11:00	Cloudy	001987	2.7673	2.7771	439.12	440.12	1.00	1.11	1.13	1.12	67	146
27-Jan-12	13:00	Cloudy	001990	2.7428	2.7538	440.12	441.12	1.00	1.20	1.23	1.21	73	151



Location: CMA2a - Causeway Bay Community Centre

Report on 24-hour TSP monitoring
Action Level ($\mu\text{g}/\text{m}^3$) - 169.5
Limit Level ($\mu\text{g}/\text{m}^3$) - 260

Date	Sampling Time	Weather Condition	Filter paper no.	Filter Weight, g		Elapse Time, hr		Sampling Time, hr	Flow Rate, m^3/min			Total Volume, m^3	TSP Level, $\mu\text{g}/\text{m}^3$
				Initial	Final	Initial	Final		Initial, Q_{si}	Final, Q_{sf}	Average		
29-Dec-11	8:00	Fine	001784	2.7687	2.9676	10089.90	10113.90	24.00	1.45	1.45	1.45	2084	95
4-Jan-12	8:00	Fine	001843	2.7577	2.9473	10116.90	10140.90	24.00	1.43	1.45	1.44	2072	92
10-Jan-12	8:00	Fine	001886	2.8004	3.0497	10143.90	10167.89	23.99	1.42	1.45	1.44	2069	121
16-Jan-12	8:00	Fine	001938	2.8050	2.9471	10170.89	10194.90	24.01	1.42	1.42	1.42	2051	69
20-Jan-12	8:00	Cloudy	001951	2.7763	2.9545	10197.90	10221.90	24.00	1.51	1.51	1.51	2167	82
26-Jan-12	8:00	Cloudy	001959	2.7829	3.0434	10224.90	10248.90	24.00	1.51	1.53	1.52	2191	119

Report on 1-hour TSP monitoring
Action Level ($\mu\text{g}/\text{m}^3$) - 323.4
Limit Level ($\mu\text{g}/\text{m}^3$) - 500

Date	Sampling Time	Weather Condition	Filter paper no.	Filter Weight, g		Elapse Time, hr		Sampling Time, hr	Flow Rate, m^3/min			Total Volume, m^3	TSP Level, $\mu\text{g}/\text{m}^3$
				Initial	Final	Initial	Final		Initial, Q_{si}	Final, Q_{sf}	Average		
30-Dec-11	8:40	Fine	001827	2.7793	2.7952	10113.90	10114.90	1.00	1.47	1.47	1.47	88	180
30-Dec-11	9:43	Fine	001832	2.7627	2.7771	10114.90	10115.90	1.00	1.47	1.47	1.47	88	163
30-Dec-11	13:00	Fine	001828	2.7566	2.7701	10115.90	10116.90	1.00	1.47	1.47	1.47	88	153
5-Jan-12	9:23	Fine	001755	2.7494	2.7623	10140.90	10141.90	1.00	1.48	1.45	1.46	88	147
5-Jan-12	13:00	Fine	001809	2.7731	2.7848	10141.90	10142.90	1.00	1.48	1.48	1.48	89	132
5-Jan-12	15:08	Fine	001914	2.7761	2.7874	10142.90	10143.90	1.00	1.48	1.48	1.48	89	128
11-Jan-12	8:53	Fine	001928	2.7923	2.8104	10167.89	10168.89	1.00	1.45	1.45	1.45	87	208
11-Jan-12	9:56	Fine	001930	2.8035	2.8144	10168.89	10169.89	1.00	1.48	1.48	1.48	89	123
11-Jan-12	15:08	Fine	001933	2.8012	2.8111	10169.89	10170.89	1.00	1.32	1.32	1.32	79	125
17-Jan-12	8:54	Fine	001940	2.8126	2.8214	10194.90	10195.90	1.00	1.50	1.50	1.50	90	98
17-Jan-12	11:00	Fine	001945	2.7894	2.7990	10195.90	10196.90	1.00	1.50	1.50	1.50	90	106
17-Jan-12	13:00	Fine	001946	2.7999	2.8079	10196.90	10197.90	1.00	1.48	1.48	1.48	89	90
21-Jan-12	9:50	Cloudy	002041	2.8002	2.8096	10221.90	10222.90	1.00	1.48	1.48	1.48	89	106
21-Jan-12	10:52	Cloudy	002043	2.7933	2.8016	10222.90	10223.90	1.00	1.48	1.48	1.48	89	94
21-Jan-12	13:00	Cloudy	001955	2.8146	2.8254	10223.90	10224.90	1.00	1.48	1.48	1.48	89	122
27-Jan-12	8:35	Cloudy	002007	2.7296	2.7394	10248.90	10249.90	1.00	1.48	1.48	1.48	89	110
27-Jan-12	9:42	Cloudy	002009	2.7367	2.7465	10249.90	10250.90	1.00	1.48	1.48	1.48	89	110
27-Jan-12	10:43	Cloudy	001986	2.7577	2.7677	10250.90	10251.90	1.00	1.51	1.51	1.51	90	111



Location: CMA3a - CWB PRE Site Office Area

Report on 24-hour TSP monitoring

Action Level ($\mu\text{g}/\text{m}^3$) - 171
Limit Level ($\mu\text{g}/\text{m}^3$) - 260

Date	Sampling Time	Weather Condition	Filter paper no.	Filter Weight, g		Elapse Time, hr		Sampling Time, hr	Flow Rate, m^3/min			Total Volume, m^3	TSP Level, $\mu\text{g}/\text{m}^3$
				Initial	Final	Initial	Final		Initial, Q_{si}	Final, Q_{sf}	Average		
29-Dec-11	8:00	Fine	001808	2.7504	2.9664	10657.42	10681.43	24.01	1.42	1.42	1.42	2046	106
4-Jan-12	8:00	Fine	001822	2.7609	2.9760	10684.42	10708.42	24.00	1.40	1.37	1.38	1989	108
10-Jan-12	8:00	Fine	001913	2.7718	3.0509	10711.41	10735.41	24.00	1.39	1.39	1.39	2008	139
17-Jan-12*	16:00	Fine	001890	2.7975	2.9705	10684.42	10708.42	24.00	1.33	1.33	1.33	1922	90
20-Jan-12	8:00	Cloudy	001876	2.7918	3.0144	10765.42	10789.42	24.00	1.34	1.34	1.34	1925	116
26-Jan-12	8:00	Cloudy	002051	2.8188	3.1112	10792.42	10816.42	24.00	1.40	1.37	1.39	1995	147

* Due to lack of electricity supply, the 24 hr-TSPs were rescheduled from 16 Jan 2012 to 17 Jan 2012

Report on 1-hour TSP monitoring

Action Level ($\mu\text{g}/\text{m}^3$) - 311.3
Limit Level ($\mu\text{g}/\text{m}^3$) - 500

Date	Sampling Time	Weather Condition	Filter paper no.	Filter Weight, g		Elapse Time, hr		Sampling Time, hr	Flow Rate, m^3/min			Total Volume, m^3	TSP Level, $\mu\text{g}/\text{m}^3$
				Initial	Final	Initial	Final		Initial, Q_{si}	Final, Q_{sf}	Average		
30-Dec-11	10:30	Fine	001850	2.7352	2.7554	10691.43	10682.42	0.99	1.39	1.39	1.39	83	244
30-Dec-11	13:00	Fine	001848	2.7488	2.7661	10682.42	10683.42	1.00	1.33	1.33	1.33	80	216
30-Dec-11	14:40	Fine	001846	2.7463	2.7648	10683.42	10684.42	1.00	1.33	1.33	1.33	80	231
5-Jan-12	8:33	Fine	001820	2.7766	2.7892	10708.42	10709.42	1.00	1.39	1.39	1.39	84	151
5-Jan-12	10:38	Fine	001757	2.7539	2.7688	10709.42	10710.42	1.00	1.36	1.39	1.38	83	156
5-Jan-12	13:00	Fine	001919	2.7773	2.7878	10710.42	10711.42	1.00	1.39	1.39	1.39	84	125
11-Jan-12	9:50	Fine	001870	2.7539	2.7707	10735.41	10736.41	1.00	1.36	1.36	1.36	82	205
11-Jan-12	13:00	Fine	001858	2.7468	2.7580	10736.41	10737.41	1.00	1.36	1.36	1.36	82	137
11-Jan-12	14:45	Fine	001937	2.7995	2.8135	10737.41	10738.41	1.00	1.39	1.39	1.39	84	167
17-Jan-12	10:00	Fine	001897	2.7891	2.7995	10738.41	10739.41	1.00	1.39	1.39	1.39	84	124
17-Jan-12	14:45	Fine	001927	2.7929	2.8023	10738.41	10740.41	1.00	1.39	1.36	1.38	83	114
17-Jan-12	15:51	Fine	001888	2.8048	2.8137	10740.41	10741.41	1.00	1.36	1.36	1.36	82	109
21-Jan-12	9:40	Cloudy	002040	2.8002	2.8125	10789.42	10790.42	1.00	1.34	1.34	1.34	80	153
21-Jan-12	13:00	Cloudy	001953	2.7926	2.8073	10790.42	10791.42	1.00	1.34	1.34	1.34	80	183
21-Jan-12	14:05	Cloudy	002047	2.7818	2.7944	10791.42	10792.42	1.00	1.37	1.37	1.37	82	154
27-Jan-12	13:00	Cloudy	001892	2.8161	2.8312	10816.42	10817.42	1.00	1.43	1.43	1.43	86	176
27-Jan-12	16:00	Cloudy	001719	2.7715	2.7887	10817.42	10818.42	1.00	1.34	1.34	1.34	80	214
27-Jan-12	17:00	Cloudy	001724	2.7700	2.7879	10818.42	10819.42	1.00	1.34	1.37	1.35	81	220



Location: CMA4a - SPCA

Report on 24-hour TSP monitoring

Action Level ($\mu\text{g}/\text{m}^3$) - 171.2
Limit Level ($\mu\text{g}/\text{m}^3$) - 260

Date	Sampling Time	Weather Condition	Filter paper no.	Filter Weight, g		Elapse Time, hr		Sampling Time, hr	Flow Rate, m^3/min			Total Volume, m^3	TSP Level, $\mu\text{g}/\text{m}^3$
				Initial	Final	Initial	Final		Initial, Q_{si}	Final, Q_{sf}	Average		
29-Dec-11	8:00	Fine	001807	2.7473	2.9013	14308.31	14332.32	24.01	1.26	1.28	1.27	1827	84
4-Jan-12	8:00	Fine	001841	2.7342	2.8990	14335.32	14359.31	23.99	1.33	1.33	1.33	1911	86
10-Jan-12	8:00	Fine	001912	2.7903	2.9925	14362.31	14386.31	24.00	1.33	1.30	1.32	1894	107
16-Jan-12	8:00	Fine	001898	2.7943	2.9291	14389.31	14413.32	24.01	1.35	1.28	1.32	1895	71
20-Jan-12	8:00	Cloudy	001891	2.8053	3.0021	14416.32	14440.32	24.00	1.10	1.10	1.10	1590	124
26-Jan-12	8:00	Cloudy	001960	2.7755	2.9830	14443.32	14467.32	24.00	1.38	1.38	1.38	1980	105

Report on 1-hour TSP monitoring

Action Level ($\mu\text{g}/\text{m}^3$) - 312.5
Limit Level ($\mu\text{g}/\text{m}^3$) - 500

Date	Sampling Time	Weather Condition	Filter paper no.	Filter Weight, g		Elapse Time, hr		Sampling Time, hr	Flow Rate, m^3/min			Total Volume, m^3	TSP Level, $\mu\text{g}/\text{m}^3$
				Initial	Final	Initial	Final		Initial, Q_{si}	Final, Q_{sf}	Average		
30-Dec-11	10:30	Fine	001830	2.7387	2.7506	14332.32	14333.32	1.00	1.30	1.28	1.29	77	154
30-Dec-11	13:00	Fine	001826	2.7488	2.7602	14333.32	14334.32	1.00	1.32	1.32	1.32	79	143
30-Dec-11	14:52	Fine	001844	2.7421	2.7546	14334.32	14335.32	1.00	1.32	1.32	1.32	79	157
5-Jan-12	8:46	Fine	001754	2.7596	2.7673	14359.31	14360.31	1.00	1.30	1.33	1.32	79	98
5-Jan-12	10:52	Fine	001758	2.7382	2.7455	14360.31	14361.31	1.00	1.30	1.33	1.32	79	93
5-Jan-12	13:00	Fine	001908	2.7769	2.7830	14361.31	14362.31	1.00	1.33	1.33	1.33	80	77
11-Jan-12	9:55	Fine	001906	2.7969	2.8073	14386.31	14387.31	1.00	1.30	1.30	1.30	78	133
11-Jan-12	13:00	Fine	001934	2.8082	2.8192	14387.31	14388.31	1.00	1.30	1.30	1.30	78	141
11-Jan-12	14:49	Fine	001899	2.7985	2.8125	14388.31	14389.31	1.00	1.33	1.30	1.32	79	177
17-Jan-12	10:00	Fine	001942	2.8010	2.8104	14413.32	14414.32	1.00	1.28	1.28	1.28	77	122
17-Jan-12	15:00	Fine	001887	2.7975	2.8047	14414.32	14415.32	1.00	1.28	1.28	1.28	77	94
17-Jan-12	16:12	Fine	001889	2.8104	2.8199	14415.32	14416.32	1.00	1.28	1.28	1.28	77	124
21-Jan-12	9:30	Cloudy	002039	2.7914	2.7981	14440.32	14441.32	1.00	1.33	1.33	1.33	80	84
21-Jan-12	13:00	Cloudy	001952	2.7786	2.7868	14441.32	14442.32	1.00	1.33	1.33	1.33	80	103
21-Jan-12	14:10	Cloudy	002048	2.8035	2.8114	14442.32	14443.32	1.00	1.33	1.33	1.33	80	99
27-Jan-12	13:00	Cloudy	001893	2.8011	2.8102	14467.32	14468.32	1.00	1.38	1.38	1.38	83	110
27-Jan-12	14:41	Cloudy	001720	2.7704	2.7785	14468.32	14469.32	1.00	1.38	1.38	1.38	83	98
27-Jan-12	15:51	Cloudy	001718	2.7755	2.7826	14469.32	14470.32	1.00	1.38	1.38	1.38	83	86



Location: CMA5a - Children Garden opposite to Pedestrian Plaza

Report on 24-hour TSP monitoring

Action Level ($\mu\text{g}/\text{m}^3$) - 181
Limit Level ($\mu\text{g}/\text{m}^3$) - 260

181
260

Date	Sampling Time	Weather Condition	Filter paper no.	Filter Weight, g		Elapse Time, hr		Sampling Time, hr	Flow Rate, m^3/min			Total Volume, m^3	TSP Level, $\mu\text{g}/\text{m}^3$
				Initial	Final	Initial	Final		Initial, Q_{si}	Final, Q_{sf}	Average		
29-Dec-11	8:00	Fine	001785	2.7761	2.9278	15301.90	15325.81	23.91	1.26	1.26	1.26	1803	84
4-Jan-12	8:00	Fine	001825	2.7610	2.9276	15328.81	15352.81	24.00	1.31	1.31	1.31	1885	88
10-Jan-12	8:00	Fine	001855	2.7409	2.9240	15355.81	15379.74	23.93	1.28	1.28	1.28	1843	99
16-Jan-12	8:00	Fine	001935	2.7906	2.8929	15382.74	15406.74	24.00	1.28	1.28	1.28	1850	55
20-Jan-12	8:00	Cloudy	001860	2.7398	2.8923	15409.74	15433.74	24.00	1.29	1.29	1.29	1851	82
26-Jan-12	8:00	Cloudy	001958	2.7784	2.9473	15436.74	15460.74	24.00	1.29	1.26	1.28	1837	92

Report on 1-hour TSP monitoring

Action Level ($\mu\text{g}/\text{m}^3$) - 332
Limit Level ($\mu\text{g}/\text{m}^3$) - 500

Date	Sampling Time	Weather Condition	Filter paper no.	Filter Weight, g		Elapse Time, hr		Sampling Time, hr	Flow Rate, m^3/min			Total Volume, m^3	TSP Level, $\mu\text{g}/\text{m}^3$
				Initial	Final	Initial	Final		Initial, Q_{si}	Final, Q_{sf}	Average		
30-Dec-11	8:00	Fine	001835	2.7655	2.7770	15325.81	15326.81	1.00	1.26	1.26	1.26	75	152
30-Dec-11	9:08	Fine	001837	2.7601	2.7719	15326.81	15327.81	1.00	1.28	1.28	1.28	77	153
30-Dec-11	10:57	Fine	001829	2.7562	2.7704	15327.81	15328.81	1.00	1.28	1.28	1.28	77	185
5-Jan-12	8:20	Fine	001840	2.7484	2.7574	15352.81	15353.80	0.99	1.31	1.31	1.31	78	116
5-Jan-12	10:15	Fine	001853	2.7338	2.7405	15353.80	15354.80	1.00	1.24	1.21	1.22	73	91
5-Jan-12	13:00	Fine	001854	2.7532	2.7597	15354.81	15355.81	1.00	1.26	1.24	1.25	75	87
11-Jan-12	8:02	Fine	001872	2.8076	2.8152	15379.74	15380.74	1.00	1.28	1.28	1.28	77	99
11-Jan-12	9:08	Fine	001857	2.7469	2.7533	15380.74	15381.74	1.00	1.21	1.21	1.21	73	88
11-Jan-12	10:20	Fine	001905	2.7694	2.7777	15381.74	15382.74	1.00	1.28	1.28	1.28	77	108
17-Jan-12	8:02	Fine	001868	2.7801	2.7887	15406.74	15407.74	1.00	1.26	1.26	1.26	76	114
17-Jan-12	9:04	Fine	001866	2.7626	2.7760	15407.74	15408.74	1.00	1.28	1.28	1.28	77	174
17-Jan-12	10:25	Fine	001943	2.7828	2.7898	15408.74	15409.74	1.00	1.28	1.28	1.28	77	91
21-Jan-12	8:00	Cloudy	002035	2.8081	2.8206	15433.74	15434.74	1.00	1.29	1.29	1.29	77	162
21-Jan-12	9:03	Cloudy	002037	2.7730	2.7871	15434.74	15435.74	1.00	1.29	1.29	1.29	77	183
21-Jan-12	13:00	Cloudy	001954	2.8049	2.8155	15435.74	15436.74	1.00	1.17	1.17	1.17	70	152
27-Jan-12	13:25	Cloudy	002068	2.8156	2.8246	15460.74	15461.74	1.00	1.17	1.22	1.19	72	126
27-Jan-12	14:38	Cloudy	002074	2.7750	2.7824	15461.74	15462.74	1.00	1.26	1.26	1.26	76	98
27-Jan-12	15:41	Cloudy	002072	2.7888	2.7943	15462.74	15463.74	1.00	1.22	1.29	1.25	75	73



Location: MA1e - International Finance Centre (Eastern Wing)

Report on 24-hour TSP monitoring

Action Level ($\mu\text{g}/\text{m}^3$) - 173.4

Limit Level ($\mu\text{g}/\text{m}^3$) - 260

Date	Sampling Time	Weather Condition	Filter paper no.	Filter Weight, g		Elapse Time, hr		Sampling Time, hr	Flow Rate, m^3/min			Total Volume, m^3	TSP Level, $\mu\text{g}/\text{m}^3$
				Initial	Final	Initial	Final		Initial, Q_{sf}	Final, Q_{sf}	Average		
29-Dec-11	8:00	Fine	001803	2.7527	2.9114	7956.28	7980.28	24.00	1.24	1.24	1.24	1786	89
4-Jan-12	8:00	Fine	001819	2.7515	2.9205	7983.28	8007.28	24.00	1.27	1.27	1.27	1832	92
10-Jan-12	8:00	Fine	001911	2.7722	2.9464	8010.28	8034.28	24.00	1.27	1.27	1.27	1829	95
16-Jan-12	8:00	Fine	001939	2.8205	2.9399	8061.33	8085.35	24.02	1.22	1.22	1.22	1755	68
20-Jan-12	8:00	Cloudy	001924	2.7983	2.9381	8088.35	8112.35	24.00	1.22	1.22	1.22	1754	80
26-Jan-12	8:00	Cloudy	001956	2.7870	3.0187	8115.35	8139.35	24.00	1.22	1.22	1.22	1759	132

Report on 1-hour TSP monitoring

Action Level ($\mu\text{g}/\text{m}^3$) - 325.1

Limit Level ($\mu\text{g}/\text{m}^3$) - 500

Date	Sampling Time	Weather Condition	Filter paper no.	Filter Weight, g		Elapse Time, hr		Sampling Time, hr	Flow Rate, m^3/min			Total Volume, m^3	TSP Level, $\mu\text{g}/\text{m}^3$
				Initial	Final	Initial	Final		Initial, Q_{sf}	Final, Q_{sf}	Average		
30-Dec-11	9:55	Fine	001781	2.7764	2.7913	7980.28	7981.28	1.00	1.24	1.27	1.26	75	198
30-Dec-11	11:00	Fine	001816	2.7689	2.7791	7981.28	7982.28	1.00	1.27	1.27	1.27	76	134
30-Dec-11	13:00	Fine	001818	2.7614	2.7728	7982.28	7983.28	1.00	1.27	1.27	1.27	76	150
5-Jan-12	8:47	Fine	001881	2.7964	2.8060	8007.28	8008.28	1.00	1.19	1.19	1.19	71	135
5-Jan-12	13:00	Fine	001884	2.7786	2.7862	8008.28	8009.28	1.00	1.19	1.19	1.19	71	106
5-Jan-12	14:17	Fine	001917	2.7991	2.8101	8009.28	8010.28	1.00	1.27	1.27	1.27	76	144
11-Jan-12	8:58	Fine	001908	2.8118	2.8202	8034.28	8035.28	1.00	1.22	1.22	1.22	73	115
11-Jan-12	10:46	Fine	001903	2.7833	2.7940	8035.28	8036.28	1.00	1.22	1.19	1.20	72	148
11-Jan-12	13:00	Fine	001901	2.7715	2.7807	8036.28	8037.28	1.00	1.24	1.22	1.23	74	125
17-Jan-12	8:26	Fine	001896	2.8076	2.8124	8085.35	8086.35	1.00	1.22	1.22	1.22	73	66
17-Jan-12	9:46	Fine	001921	2.8288	2.8315	8086.35	8087.35	1.00	1.00	1.00	1.00	60	45
17-Jan-12	10:51	Fine	001922	2.8053	2.8095	8087.35	8088.35	1.00	1.22	1.22	1.22	73	57
21-Jan-12	8:20	Cloudy	001879	2.7920	2.8009	8112.35	8113.35	1.00	1.22	1.22	1.22	73	122
21-Jan-12	9:25	Cloudy	001947	2.7867	2.7964	8113.35	8114.35	1.00	1.22	1.22	1.22	73	133
21-Jan-12	10:32	Cloudy	001949	2.7772	2.7871	8114.35	8115.35	1.00	1.22	1.22	1.22	73	135
27-Jan-12	13:00	Cloudy	001895	2.8018	2.8142	8139.35	8140.35	1.00	1.19	1.19	1.19	72	173
27-Jan-12	15:22	Cloudy	001995	2.7597	2.7687	8140.35	8141.35	1.00	1.19	1.19	1.19	72	126
27-Jan-12	16:26	Cloudy	001997	2.7437	2.7527	8141.35	8142.35	1.00	1.19	1.19	1.19	72	126



Location: MA1w - International Finance Centre (Western Wing)

Report on 24-hour TSP monitoring

Action Level ($\mu\text{g}/\text{m}^3$) - 173.4

Limit Level ($\mu\text{g}/\text{m}^3$) - 260

Date	Sampling Time	Weather Condition	Filter paper no.	Filter Weight, g		Elapse Time, hr		Sampling Time, hr	Flow Rate, m^3/min			Total Volume, m^3	TSP Level, $\mu\text{g}/\text{m}^3$
				Initial	Final	Initial	Final		Initial, Q_{si}	Final, Q_{sf}	Average		
29-Dec-11	8:00	Fine	001804	2.7542	2.9474	11108.67	11132.67	24.00	1.50	1.50	1.50	2166	89
4-Jan-12	8:00	Fine	001817	2.7483	2.9290	11135.68	11159.68	24.00	1.48	1.48	1.48	2138	85
10-Jan-12	8:00	Fine	001910	2.7943	2.9290	11162.68	11186.68	24.00	1.46	1.46	1.46	2101	64
17-Jan-12*	14:20	Fine	001926	2.7988	2.8941	11192.70	11216.71	24.01	1.19	1.19	1.19	1718	55
20-Jan-12	8:00	Cloudy	001878	2.7857	2.9096	11216.71	11240.71	24.00	1.17	1.17	1.17	1683	74
26-Jan-12	8:00	Cloudy	001957	2.7925	3.0467	11243.71	11267.71	24.00	1.46	1.46	1.46	2108	121

* Due to lack of electricity supply, the 24 hr-TSPs were rescheduled from 16 Jan 2012 to 17 Jan 2012

Report on 1-hour TSP monitoring

Action Level ($\mu\text{g}/\text{m}^3$) - 325.1

Limit Level ($\mu\text{g}/\text{m}^3$) - 500

Date	Sampling Time	Weather Condition	Filter paper no.	Filter Weight, g		Elapse Time, hr		Sampling Time, hr	Flow Rate, m^3/min			Total Volume, m^3	TSP Level, $\mu\text{g}/\text{m}^3$
				Initial	Final	Initial	Final		Initial, Q_{si}	Final, Q_{sf}	Average		
30-Dec-11	8:47	Fine	001782	2.7666	2.7849	11132.68	11133.68	1.00	1.48	1.48	1.48	89	206
30-Dec-11	9:49	Fine	001783	2.7554	2.7729	11133.68	11134.68	1.00	1.48	1.48	1.48	89	197
30-Dec-11	10:51	Fine	001824	2.744	2.7587	11134.68	11135.68	1.00	1.48	1.48	1.48	89	165
5-Jan-12	8:52	Fine	001882	2.7924	2.8000	11159.68	11160.68	1.00	1.48	1.48	1.48	89	85
5-Jan-12	13:00	Fine	001883	2.7915	2.7999	11160.68	11161.68	1.00	1.48	1.48	1.48	89	94
5-Jan-12	14:25	Fine	001916	2.7841	2.7935	11161.68	11162.68	1.00	1.48	1.48	1.48	89	106
11-Jan-12	8:30	Fine	001909	2.7960	2.8028	11186.68	11187.68	1.00	1.48	1.48	1.48	89	76
11-Jan-12	9:36	Fine	001907	2.7976	2.8039	11187.68	11188.68	1.00	1.48	1.46	1.47	88	71
11-Jan-12	10:40	Fine	001904	2.7787	2.7866	11188.68	11189.68	1.00	1.48	1.48	1.48	89	89
17-Jan-12	9:40	Fine	001902	2.7665	2.7795	11189.70	11190.70	1.00	1.34	1.29	1.31	79	165
17-Jan-12	10:58	Fine	001923	2.7949	2.7994	11190.70	11191.71	1.01	1.29	1.29	1.29	78	58
17-Jan-12	13:00	Fine	001925	2.7920	2.7976	11191.71	11192.71	1.00	1.24	1.24	1.24	74	75
21-Jan-12	8:28	Cloudy	001880	2.8043	2.8135	11240.71	11241.71	1.00	1.29	1.29	1.29	77	119
21-Jan-12	9:33	Cloudy	001948	2.7731	2.7824	11241.71	11242.71	1.00	1.29	1.29	1.29	77	120
21-Jan-12	10:40	Cloudy	001950	2.7633	2.7743	11242.71	11243.71	1.00	1.44	1.44	1.44	86	128
27-Jan-12	13:00	Cloudy	001894	2.8038	2.8183	11267.71	11268.71	1.00	1.44	1.44	1.44	86	168
27-Jan-12	15:15	Cloudy	001994	2.7424	2.7528	11268.71	11269.71	1.00	1.44	1.46	1.45	87	119
27-Jan-12	16:17	Cloudy	001996	2.7462	2.7572	11269.71	11270.71	1.00	1.49	1.49	1.49	89	123



Location: CMA1b - Oil St Community Liaison Centre

Report on 24-hour TSP monitoring

Action Level ($\mu\text{g}/\text{m}^3$) - 176.7

Limit Level ($\mu\text{g}/\text{m}^3$) - 260

Date	Sampling Time	Weather Condition	Filter paper no.	Filter Weight, g		Elapse Time, hr		Sampling Time, hr	Flow Rate, m^3/min			Total Volume, m^3	TSP Level, $\mu\text{g}/\text{m}^3$
				Initial	Final	Initial	Final		Initial, Q_{si}	Final, Q_{sf}	Average		
1-Feb-12	8:00	Sunny	001993	2.7360	2.9081	441.12	465.11	23.99	1.22	1.20	1.21	1740	99
7-Feb-12	8:00	Cloudy	002005	2.7433	2.8904	468.11	492.11	24.00	1.24	1.28	1.26	1816	81
16-Feb-12	8:00	Cloudy	002054	2.7899	2.9224	507.76	531.75	23.99	1.24	1.24	1.24	1790	74
18-Feb-12	8:00	Cloudy	002084	2.8032	3.0632	531.75	555.74	23.99	1.29	1.27	1.28	1838	141
24-Feb-12	8:00	Cloudy	002173	2.7512	2.9340	558.14	582.73	24.59	1.24	1.15	1.19	1762	104

* Due to lack of electricity supply, the 24 hr-TSPs were rescheduled from 13 Feb 2012 to 16 Feb 2012

Report on 1-hour TSP monitoring

Action Level ($\mu\text{g}/\text{m}^3$) - 320.1

Limit Level ($\mu\text{g}/\text{m}^3$) - 500

Date	Sampling Time	Weather Condition	Filter paper no.	Filter Weight, g		Elapse Time, hr		Sampling Time, hr	Flow Rate, m^3/min			Total Volume, m^3	TSP Level, $\mu\text{g}/\text{m}^3$
				Initial	Final	Initial	Final		Initial, Q_{si}	Final, Q_{sf}	Average		
2-Feb-12	8:08	Sunny	002103	2.7861	2.7930	465.11	466.11	1.00	1.20	1.20	1.20	72	96
2-Feb-12	9:14	Sunny	002110	2.8120	2.8205	466.11	467.11	1.00	1.15	1.15	1.15	69	123
2-Feb-12	10:20	Sunny	002105	2.7811	2.7909	467.11	468.11	1.00	1.10	1.10	1.10	66	148
8-Feb-12	8:45	Cloudy	001970	2.8002	2.8116	492.11	493.11	1.00	1.25	1.25	1.25	75	152
8-Feb-12	9:50	Cloudy	001972	2.7643	2.7727	493.11	494.11	1.00	1.25	1.25	1.25	75	112
8-Feb-12	10:53	Cloudy	001974	2.7524	2.7622	494.71	495.71	1.00	1.25	1.25	1.25	75	130
14-Feb-12	10:30	Cloudy	002194	2.7293	2.7360	495.32	496.32	1.00	1.19	1.19	1.19	71	94
14-Feb-12	13:00	Cloudy	002198	2.7617	2.7702	496.32	497.32	1.00	1.22	1.22	1.22	73	117
14-Feb-12	14:05	Cloudy	002200	2.7613	2.7696	497.32	498.32	1.00	1.24	1.26	1.25	75	111
20-Feb-12	8:35	Cloudy	002210	2.7536	2.7685	555.74	556.74	1.00	1.24	1.27	1.26	75	198
20-Feb-12	9:38	Cloudy	002254	2.7664	2.7800	556.74	557.74	1.00	1.24	1.24	1.24	75	182
20-Feb-12	15:50	Cloudy	002119	2.7667	2.7845	557.74	558.74	1.00	1.27	1.24	1.26	75	236
25-Feb-12	8:45	Cloudy	002256	2.8082	2.8163	582.73	583.73	1.00	1.23	1.25	1.24	74	109
25-Feb-12	9:50	Cloudy	002206	2.7354	2.7437	583.73	584.73	1.00	1.23	1.30	1.26	76	110
25-Feb-12	10:55	Cloudy	002205	2.7288	2.7369	584.73	585.73	1.00	1.23	1.27	1.25	75	108



Location: CMA2a - Causeway Bay Community Centre

Report on 24-hour TSP monitoring
 Action Level ($\mu\text{g}/\text{m}^3$) - 169.5
 Limit Level ($\mu\text{g}/\text{m}^3$) - 260

Date	Sampling Time	Weather Condition	Filter paper no.	Filter Weight, g		Elapse Time, hr		Sampling Time, hr	Flow Rate, m^3/min			Total Volume, m^3	TSP Level, $\mu\text{g}/\text{m}^3$
				Initial	Final	Initial	Final		Initial, Q_{si}	Final, Q_{sf}	Average		
1-Feb-12	8:00	Sunny	001989	2.7633	2.8787	10251.90	10275.90	24.00	1.24	1.29	1.26	1819	63
7-Feb-12	8:00	Cloudy	002004	2.7482	2.9003	10278.90	10302.88	23.98	1.50	1.46	1.48	2128	71
13-Feb-12	8:00	Cloudy	002063	2.7787	2.9933	10305.89	10329.90	24.01	1.47	1.42	1.44	2080	103
18-Feb-12	8:00	Cloudy	002201	2.7590	3.0172	10332.90	10356.89	23.99	1.49	1.39	1.44	2079	124
24-Feb-12	8:00	Cloudy	002182	2.7366	2.8782	10359.89	10383.88	23.99	1.50	1.39	1.44	2080	68

Report on 1-hour TSP monitoring
 Action Level ($\mu\text{g}/\text{m}^3$) - 323.4
 Limit Level ($\mu\text{g}/\text{m}^3$) - 500

Date	Sampling Time	Weather Condition	Filter paper no.	Filter Weight, g		Elapse Time, hr		Sampling Time, hr	Flow Rate, m^3/min			Total Volume, m^3	TSP Level, $\mu\text{g}/\text{m}^3$
				Initial	Final	Initial	Final		Initial, Q_{si}	Final, Q_{sf}	Average		
2-Feb-12	8:31	Sunny	002104	2.7929	2.8014	10275.90	10276.90	1.00	1.45	1.45	1.45	87	98
2-Feb-12	9:36	Sunny	002109	2.8168	2.8263	10276.90	10277.90	1.00	1.47	1.47	1.47	88	107
2-Feb-12	10:55	Sunny	002108	2.7929	2.8088	10277.90	10278.90	1.00	1.47	1.45	1.46	88	181
8-Feb-12	8:30	Cloudy	001969	2.8060	2.8173	10302.89	10303.89	1.00	1.46	1.46	1.46	87	129
8-Feb-12	9:46	Cloudy	001971	2.7596	2.7697	10303.89	10304.89	1.00	1.51	1.46	1.48	89	113
8-Feb-12	10:58	Cloudy	001973	2.7751	2.7838	10304.89	10305.89	1.00	1.51	1.48	1.50	90	97
14-Feb-12	9:10	Cloudy	002197	2.7501	2.7562	10329.90	10330.90	1.00	1.44	1.44	1.44	86	71
14-Feb-12	10:15	Cloudy	002193	2.7509	2.7574	10330.90	10331.90	1.00	1.44	1.44	1.44	86	75
14-Feb-12	13:00	Cloudy	002196	2.7407	2.7487	10331.90	10332.90	1.00	1.47	1.47	1.47	88	91
20-Feb-12	8:25	Cloudy	002221	2.7914	2.8032	10356.89	10357.89	1.00	1.50	1.50	1.50	90	131
20-Feb-12	9:27	Cloudy	002211	2.7254	2.7406	10357.89	10358.89	1.00	1.50	1.50	1.50	90	169
20-Feb-12	15:36	Cloudy	002118	2.7806	2.7942	10358.89	10359.89	1.00	1.50	1.50	1.50	90	151
25-Feb-12	8:32	Cloudy	002255	2.7932	2.8017	10383.88	10384.88	1.00	1.47	1.50	1.49	89	95
25-Feb-12	9:36	Cloudy	002209	2.7622	2.7710	10384.88	10385.88	1.00	1.47	1.47	1.47	88	100
25-Feb-12	10:40	Cloudy	002208	2.7504	2.7598	10385.88	10386.88	1.00	1.47	1.47	1.47	88	106



Location: CMA3a - CWB PRE Site Office Area

Report on 24-hour TSP monitoring
Action Level ($\mu\text{g}/\text{m}^3$) - 171
Limit Level ($\mu\text{g}/\text{m}^3$) - 260

Date	Sampling Time	Weather Condition	Filter paper no.	Filter Weight, g		Elapse Time, hr		Sampling Time, hr	Flow Rate, m^3/min			Total Volume, m^3	TSP Level, $\mu\text{g}/\text{m}^3$
				Initial	Final	Initial	Final		Initial, Q_{si}	Final, Q_{sf}	Average		
1-Feb-12	8:00	Sunny	002021	2.7961	3.0180	10819.42	10843.41	23.99	1.42	1.42	1.42	2046	108
7-Feb-12	8:00	Cloudy	001968	2.7981	3.0211	10846.41	10870.41	24.00	1.36	1.37	1.37	1969	113
14-Feb-12	8:00	Cloudy	001985	2.7534	2.9250	10898.64	10922.65	24.01	1.38	1.32	1.35	1949	88
18-Feb-12	8:00	Cloudy	002053	2.7979	3.0659	10922.65	10946.64	23.99	1.33	1.33	1.33	1912	140
24-Feb-12	8:00	Cloudy	002187	2.7404	2.8786	10949.64	10973.63	23.99	1.33	1.33	1.33	1913	72

* Due to lack of electricity supply, the 24 hr-TSPs were rescheduled from 13 Feb 2012 to 14 Feb 2012

Report on 1-hour TSP monitoring
Action Level ($\mu\text{g}/\text{m}^3$) - 311.3
Limit Level ($\mu\text{g}/\text{m}^3$) - 500

Date	Sampling Time	Weather Condition	Filter paper no.	Filter Weight, g		Elapse Time, hr		Sampling Time, hr	Flow Rate, m^3/min			Total Volume, m^3	TSP Level, $\mu\text{g}/\text{m}^3$
				Initial	Final	Initial	Final		Initial, Q_{si}	Final, Q_{sf}	Average		
2-Feb-12	13:00	Cloudy	002089	2.7948	2.8063	10843.41	10844.41	1.00	1.33	1.33	1.33	80	144
2-Feb-12	15:30	Cloudy	001963	2.7800	2.8028	10844.41	10845.41	1.00	1.33	1.33	1.33	80	285
2-Feb-12	16:40	Cloudy	001964	2.8026	2.8171	10845.41	10846.41	1.00	1.33	1.33	1.33	80	182
8-Feb-12	8:38	Cloudy	002106	2.7912	2.8142	10870.41	10871.41	1.00	1.40	1.40	1.40	84	273
8-Feb-12	9:43	Cloudy	002128	2.7470	2.7658	10871.41	10872.41	1.00	1.43	1.43	1.43	86	219
8-Feb-12	10:48	Cloudy	002122	2.7622	2.7766	10872.41	10873.41	1.00	1.43	1.46	1.45	87	166
14-Feb-12	10:35	Cloudy	001977	2.7645	2.7751	10895.64	10896.64	1.00	1.33	1.33	1.33	80	133
14-Feb-12	13:12	Cloudy	001979	2.7502	2.7643	10896.64	10897.64	1.00	1.33	1.33	1.33	80	177
14-Feb-12	14:18	Cloudy	001981	2.7557	2.7653	10897.64	10898.64	1.00	1.33	1.33	1.33	80	121
20-Feb-12	8:38	Cloudy	002133	2.7406	2.7527	10946.64	10947.64	1.00	1.27	1.21	1.24	74	162
20-Feb-12	9:43	Cloudy	002135	2.7502	2.7618	10947.64	10948.64	1.00	1.33	1.33	1.33	80	145
20-Feb-12	15:25	Cloudy	002117	2.7780	2.7908	10948.64	10949.64	1.00	1.30	1.33	1.32	79	162
25-Feb-12	8:11	Cloudy	002142	2.7451	2.7552	10973.63	10974.63	1.00	1.30	1.30	1.30	78	129
25-Feb-12	9:16	Cloudy	002144	2.7284	2.7374	10974.63	10975.63	1.00	1.33	1.27	1.30	78	115
25-Feb-12	10:23	Cloudy	002146	2.7325	2.7427	10975.63	10976.63	1.00	1.27	1.27	1.27	76	134



Location: CMA4a - SPCA

Report on 24-hour TSP monitoring

Action Level ($\mu\text{g}/\text{m}^3$) - 171.2
 Limit Level ($\mu\text{g}/\text{m}^3$) - 260

Date	Sampling Time	Weather Condition	Filter paper no.	Filter Weight, g		Elapse Time, hr		Sampling Time, hr	Flow Rate, m^3/min			Total Volume, m^3	TSP Level, $\mu\text{g}/\text{m}^3$
				Initial	Final	Initial	Final		Initial, Q_{si}	Final, Q_{sf}	Average		
1-Feb-12	8:00	Sunny	001725	2.7689	2.8984	14470.32	14494.32	24.00	1.35	1.37	1.36	1956	66
7-Feb-12	8:00	Cloudy	001967	2.8054	3.0973	14497.32	14521.32	24.00	1.37	1.36	1.36	1961	149
13-Feb-12	8:00	Cloudy	002123	2.7489	3.0493	14524.32	14548.32	24.00	1.34	1.36	1.35	1950	154
18-Feb-12	8:00	Cloudy	001983	2.7556	2.9606	14551.32	14575.31	23.99	1.32	1.32	1.32	1902	108
24-Feb-12	8:00	Cloudy	002116	2.7746	2.8735	14578.31	14602.30	23.99	1.32	1.30	1.31	1887	52

Report on 1-hour TSP monitoring

Action Level ($\mu\text{g}/\text{m}^3$) - 312.5
 Limit Level ($\mu\text{g}/\text{m}^3$) - 500

Date	Sampling Time	Weather Condition	Filter paper no.	Filter Weight, g		Elapse Time, hr		Sampling Time, hr	Flow Rate, m^3/min			Total Volume, m^3	TSP Level, $\mu\text{g}/\text{m}^3$
				Initial	Final	Initial	Final		Initial, Q_{si}	Final, Q_{sf}	Average		
2-Feb-12	13:00	Sunny	002107	2.7820	2.7953	14494.32	14495.32	1.00	1.37	1.32	1.35	81	165
2-Feb-12	15:15	Sunny	001961	2.7760	2.7897	14495.32	14496.32	1.00	1.35	1.35	1.35	81	170
2-Feb-12	16:57	Sunny	001962	2.7789	2.7940	14496.32	14497.32	1.00	1.32	1.32	1.32	79	190
8-Feb-12	8:22	Cloudy	002130	2.7449	2.7504	14521.32	14522.32	1.00	1.33	1.33	1.33	80	69
8-Feb-12	9:28	Cloudy	002129	2.7630	2.7763	14522.32	14523.32	1.00	1.38	1.38	1.38	83	161
8-Feb-12	10:35	Cloudy	002121	2.7456	2.7532	14523.32	14524.32	1.00	1.33	1.33	1.33	80	95
14-Feb-12	10:59	Cloudy	001978	2.7274	2.7338	14548.32	14549.32	1.00	1.32	1.32	1.32	79	81
14-Feb-12	13:31	Cloudy	001980	2.7521	2.7578	14549.32	14550.32	1.00	1.32	1.27	1.30	78	73
14-Feb-12	14:36	Cloudy	001982	2.7360	2.7464	14550.32	14551.32	1.00	1.32	1.32	1.32	79	131
20-Feb-12	8:20	Cloudy	002132	2.7422	2.7517	14575.31	14576.31	1.00	1.16	1.16	1.16	70	136
20-Feb-12	9:25	Cloudy	002134	2.7307	2.7416	14576.31	14577.31	1.00	1.16	1.11	1.14	68	160
20-Feb-12	10:32	Cloudy	002136	2.7409	2.7449	14577.31	14578.31	1.00	1.16	1.16	1.16	70	57
25-Feb-12	8:31	Cloudy	002143	2.7490	2.7585	14602.30	14603.30	1.00	1.32	1.30	1.31	79	121
25-Feb-12	9:35	Cloudy	002145	2.7345	2.7439	14603.30	14604.30	1.00	1.32	1.32	1.32	79	118
25-Feb-12	10:41	Cloudy	002140	2.7414	2.7499	14604.30	14605.30	1.00	1.35	1.32	1.33	80	106



Location: CMA5a - Children Garden opposite to Pedestrian Plaza

Report on 24-hour TSP monitoring

Action Level ($\mu\text{g}/\text{m}^3$) - 181
 Limit Level ($\mu\text{g}/\text{m}^3$) - 260

Date	Sampling Time	Weather Condition	Filter paper no.	Filter Weight, g		Elapse Time, hr		Sampling Time, hr	Flow Rate, m^3/min			Total Volume, m^3	TSP Level, $\mu\text{g}/\text{m}^3$
				Initial	Final	Initial	Final		Initial, Q_{si}	Final, Q_{sf}	Average		
1-Feb-12	8:00	Sunny	002070	2.7990	2.9433	15463.74	15487.64	23.90	1.26	1.26	1.26	1804	80
7-Feb-12	8:00	Cloudy	001966	2.8043	2.9097	15490.64	15514.64	24.00	1.26	1.31	1.29	1852	57
13-Feb-12	8:00	Cloudy	001976	2.7490	2.9003	15517.64	15541.64	24.00	1.26	1.30	1.28	1840	82
20-Feb-12	15:18	Cloudy	002188	2.7335	2.8693	15551.44	15575.42	23.98	1.28	1.28	1.28	1841	74
24-Feb-12	8:00	Cloudy	002113	2.8214	2.9115	15575.42	15599.42	24.00	1.28	1.28	1.28	1842	49

* Due to lack of electricity supply, the 24 hr-TSPs were rescheduled from 18 Feb 2012 to 20 Feb 2012

Report on 1-hour TSP monitoring

Level ($\mu\text{g}/\text{m}^3$) - 332
 Level ($\mu\text{g}/\text{m}^3$) - 500

Date	Sampling Time	Weather Condition	Filter paper no.	Filter Weight, g		Elapse Time, hr		Sampling Time, hr	Flow Rate, m^3/min			Total Volume, m^3	TSP Level, $\mu\text{g}/\text{m}^3$
				Initial	Final	Initial	Final		Initial, Q_{si}	Final, Q_{sf}	Average		
2-Feb-12	8:05	Sunny	002075	2.7856	2.7929	15487.64	15488.64	1.00	1.28	1.28	1.28	77	95
2-Feb-12	9:08	Sunny	002102	2.7998	2.8067	15488.64	15489.64	1.00	1.28	1.26	1.27	76	91
2-Feb-12	10:15	Sunny	002101	2.8017	2.8120	15489.64	15490.64	1.00	1.28	1.28	1.28	77	134
8-Feb-12	8:05	Cloudy	002096	2.7914	2.7986	15514.64	15515.64	1.00	1.31	1.31	1.31	79	91
8-Feb-12	9:07	Cloudy	002091	2.7967	2.8034	15515.64	15516.64	1.00	1.31	1.31	1.31	79	85
8-Feb-12	14:23	Cloudy	002090	2.7977	2.8055	15516.64	15517.64	1.00	1.31	1.31	1.31	79	99
14-Feb-12	8:11	Cloudy	002078	2.8061	2.8119	15541.64	15542.64	1.00	1.25	1.30	1.28	77	76
14-Feb-12	9:22	Cloudy	002088	2.7787	2.7834	15542.64	15543.64	1.00	1.16	1.16	1.16	69	68
14-Feb-12	10:25	Cloudy	002081	2.7932	2.7990	15543.64	15544.64	1.00	1.25	1.25	1.25	75	77
20-Feb-12	8:20	Cloudy	002111	2.8254	2.8288	15548.44	15549.44	1.00	1.30	1.26	1.28	77	44
20-Feb-12	13:00	Cloudy	002112	2.8284	2.8389	15549.44	15550.44	1.00	1.30	1.30	1.30	78	134
20-Feb-12	14:15	Cloudy	002174	2.7533	2.7566	15550.44	15551.44	1.00	1.26	1.26	1.26	75	44
25-Feb-12	8:00	Cloudy	002120	2.7653	2.7703	15599.42	15600.42	1.00	1.26	1.26	1.26	76	66
25-Feb-12	9:05	Cloudy	002114	2.8158	2.8205	15600.42	15601.42	1.00	1.23	1.21	1.22	73	64
25-Feb-12	10:10	Cloudy	002030	2.7724	2.7784	15601.42	15602.42	1.00	1.23	1.21	1.22	73	82



Location: MA1e - International Finance Centre (Eastern Wing)

Report on 24-hour TSP monitoring

Action Level ($\mu\text{g}/\text{m}^3$) - 173.4

Limit Level ($\mu\text{g}/\text{m}^3$) - 260

Date	Sampling Time	Weather Condition	Filter paper no.	Filter Weight, g		Elapse Time, hr		Sampling Time, hr	Flow Rate, m^3/min			Total Volume, m^3	TSP Level, $\mu\text{g}/\text{m}^3$
				Initial	Final	Initial	Final		Initial, Q_{si}	Final, Q_{sf}	Average		
1-Feb-12	8:00	Sunny	001999	2.7650	2.8898	8142.35	8166.35	24.00	1.22	1.21	1.21	1748	71
7-Feb-12	8:00	Cloudy	002065	2.8143	2.9376	8169.35	8193.35	24.00	1.21	1.22	1.22	1750	70
13-Feb-12	8:00	Cloudy	002016	2.7981	2.9347	8196.35	8220.35	24.00	1.16	1.21	1.18	1703	80
18-Feb-12	8:00	Cloudy	002056	2.8020	2.9912	8223.36	8247.35	23.99	1.18	1.21	1.20	1723	110
24-Feb-12	8:00	Cloudy	002177	2.7663	2.8614	8250.35	8274.34	23.99	1.16	1.16	1.16	1666	57

Report on 1-hour TSP monitoring

Action Level ($\mu\text{g}/\text{m}^3$) - 325.1

Limit Level ($\mu\text{g}/\text{m}^3$) - 500

Date	Sampling Time	Weather Condition	Filter paper no.	Filter Weight, g		Elapse Time, hr		Sampling Time, hr	Flow Rate, m^3/min			Total Volume, m^3	TSP Level, $\mu\text{g}/\text{m}^3$
				Initial	Final	Initial	Final		Initial, Q_{si}	Final, Q_{sf}	Average		
2-Feb-12	8:22	Cloudy	002019	2.8057	2.8105	8166.35	8167.35	1.00	1.19	1.19	1.19	71	67
2-Feb-12	9:37	Cloudy	002024	2.7877	2.7934	8167.35	8168.35	1.00	1.19	1.19	1.19	71	80
2-Feb-12	11:00	Cloudy	002026	2.7861	2.7927	8168.35	8169.35	1.00	1.19	1.19	1.19	71	93
8-Feb-12	8:15	Cloudy	002022	2.8018	2.8078	8193.35	8194.35	1.00	1.22	1.22	1.22	73	82
8-Feb-12	9:37	Cloudy	002011	2.7409	2.7471	8194.35	8195.35	1.00	1.22	1.22	1.22	73	84
8-Feb-12	10:47	Cloudy	002013	2.7395	2.7467	8195.35	8196.35	1.00	1.22	1.22	1.22	73	98
14-Feb-12	8:28	Cloudy	002062	2.8141	2.8224	8220.36	8221.36	1.00	1.15	1.21	1.18	71	117
14-Feb-12	9:36	Cloudy	002060	2.8059	2.8123	8221.36	8222.36	1.00	1.15	1.15	1.15	69	92
14-Feb-12	10:40	Cloudy	002058	2.8166	2.8214	8222.36	8223.36	1.00	1.15	1.15	1.15	69	69
20-Feb-12	8:35	Cloudy	002052	2.7839	2.7895	8247.35	8248.35	1.00	1.16	1.19	1.17	70	80
20-Feb-12	9:41	Cloudy	002181	2.7476	2.7520	8248.35	8249.35	1.00	1.16	1.16	1.16	69	63
20-Feb-12	10:45	Cloudy	002179	2.7611	2.7691	8249.35	8250.35	1.00	1.16	1.16	1.16	69	115
25-Feb-12	8:46	Cloudy	002172	2.7538	2.7599	8274.34	8275.34	1.00	1.19	1.19	1.19	71	86
25-Feb-12	9:50	Cloudy	002170	2.7685	2.7747	8275.34	8276.34	1.00	1.16	1.19	1.17	70	88
25-Feb-12	10:52	Cloudy	002168	2.7840	2.7918	8276.34	8277.34	1.00	1.16	1.21	1.19	71	110



Location: MA1w - International Finance Centre (Western Wing)

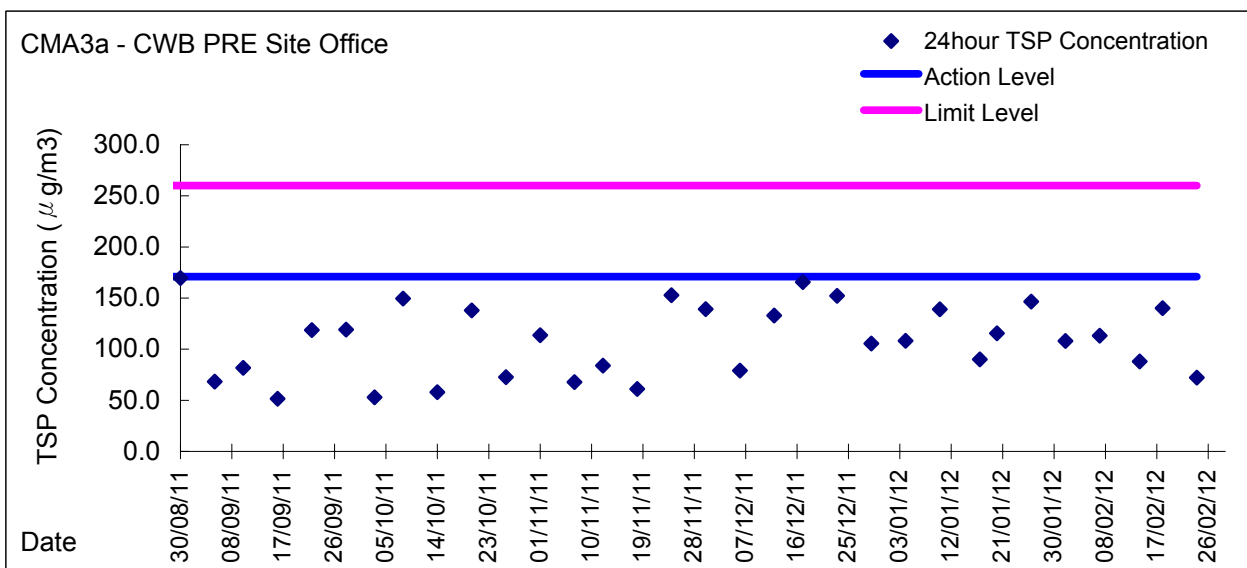
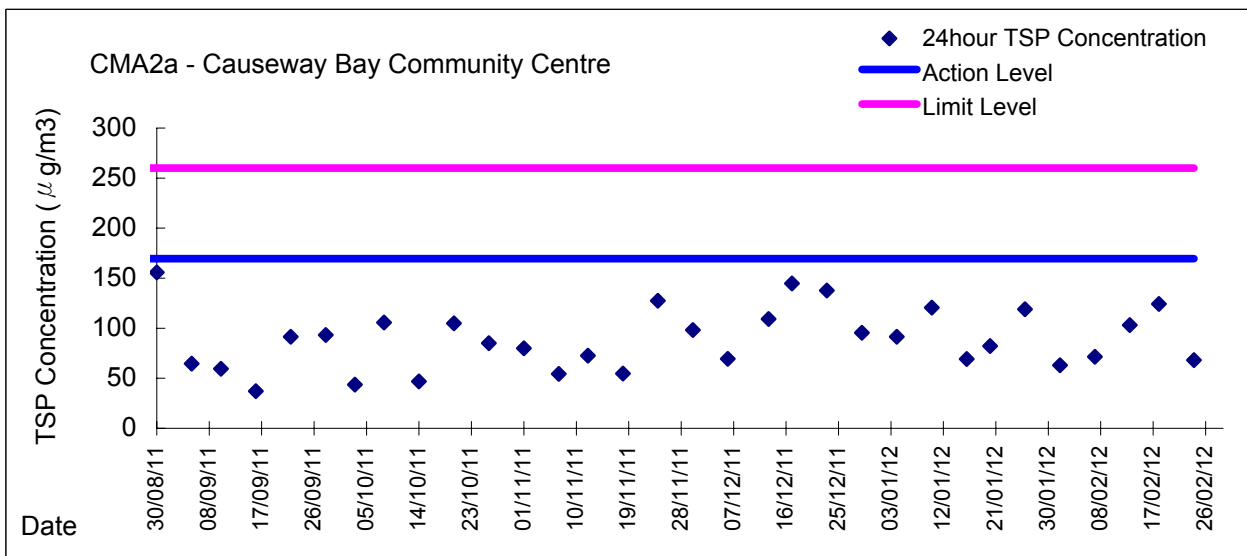
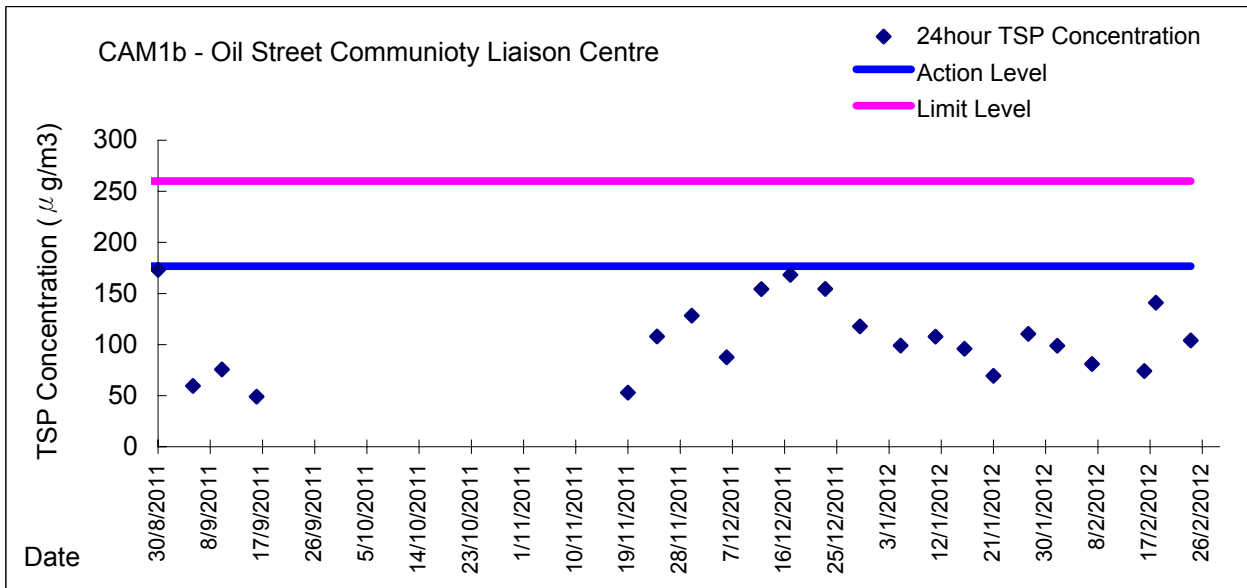
Report on 24-hour TSP monitoring
 Action Level ($\mu\text{g}/\text{m}^3$) - 173.4
 Limit Level ($\mu\text{g}/\text{m}^3$) - 260

Date	Sampling Time	Weather Condition	Filter paper no.	Filter Weight, g		Elapse Time, hr		Sampling Time, hr	Flow Rate, m^3/min			Total Volume, m^3	TSP Level, $\mu\text{g}/\text{m}^3$
				Initial	Final	Initial	Final		Initial, Q_{si}	Final, Q_{sf}	Average		
1-Feb-12	8:00	Sunny	001998	2.7510	2.9136	11270.71	11294.71	24.00	1.46	1.48	1.47	2115	77
7-Feb-12	8:00	Cloudy	002064	2.7987	2.9217	11297.71	11321.71	24.00	1.36	1.46	1.41	2027	61
13-Feb-12	8:00	Cloudy	002015	2.7755	2.9277	11324.71	11348.71	24.00	1.43	1.43	1.43	2056	74
18-Feb-12	8:00	Cloudy	002055	2.7834	2.9834	11351.71	11375.70	24.00	1.43	1.38	1.40	2022	99
24-Feb-12	8:00	Cloudy	002176	2.7664	2.8878	11378.70	11402.69	23.99	1.38	1.45	1.42	2040	59

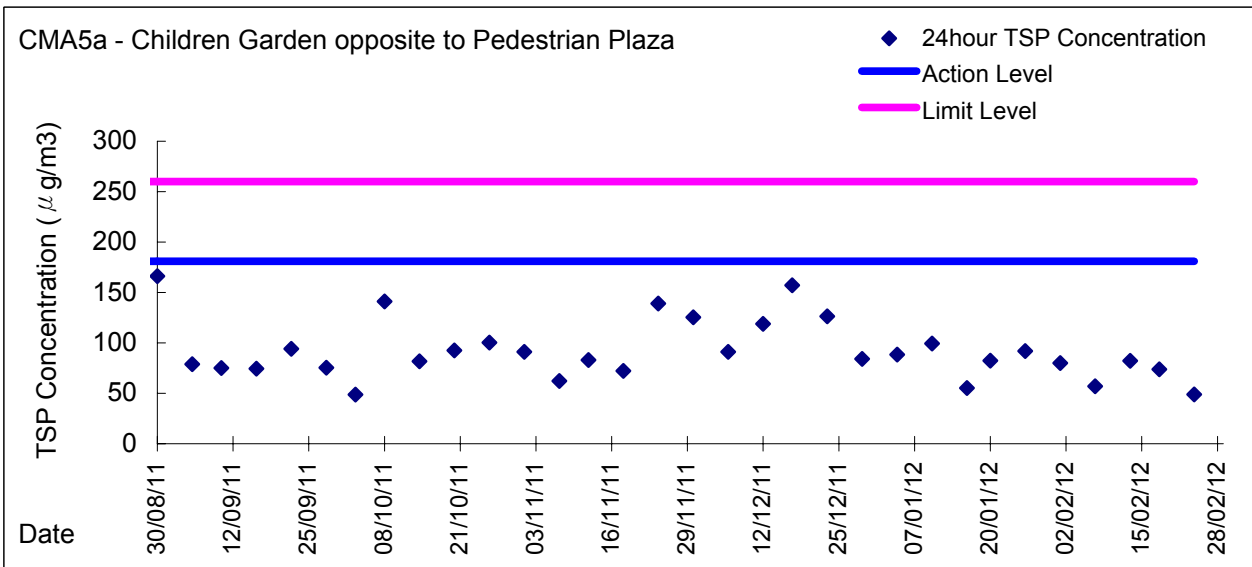
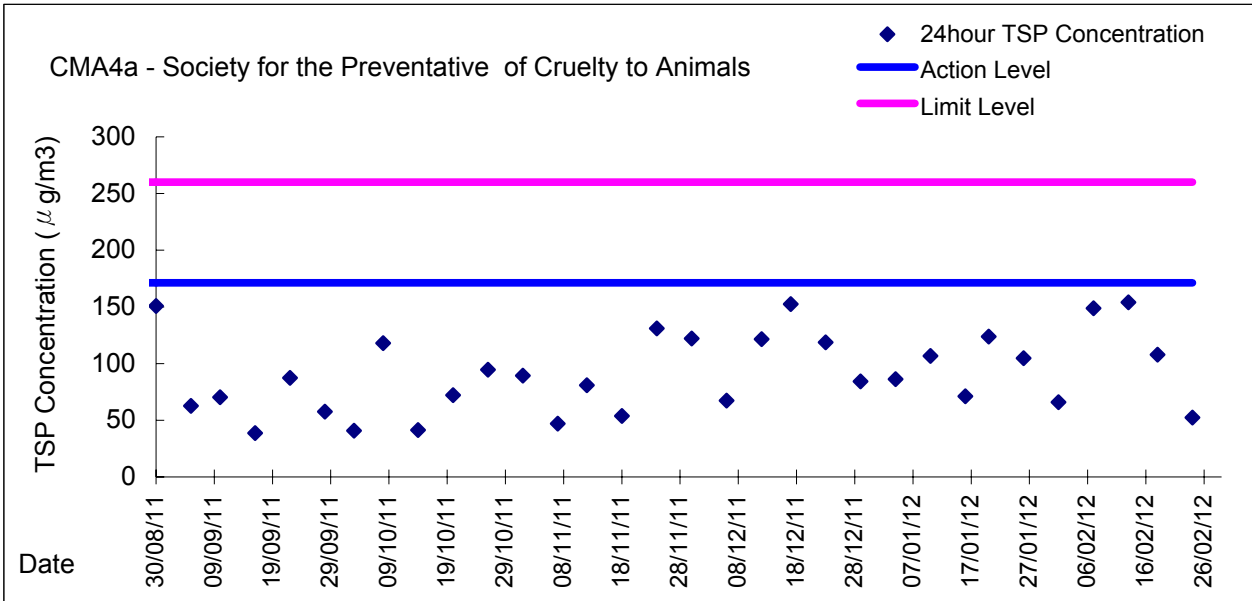
Report on 1-hour TSP monitoring
 Action Level ($\mu\text{g}/\text{m}^3$) - 325.1
 Limit Level ($\mu\text{g}/\text{m}^3$) - 500

Date	Sampling Time	Weather Condition	Filter paper no.	Filter Weight, g		Elapse Time, hr		Sampling Time, hr	Flow Rate, m^3/min			Total Volume, m^3	TSP Level, $\mu\text{g}/\text{m}^3$
				Initial	Final	Initial	Final		Initial, Q_{si}	Final, Q_{sf}	Average		
2-Feb-12	8:23	Sunny	002025	2.7923	2.8002	11294.71	11295.71	1.00	1.48	1.46	1.47	88	90
2-Feb-12	9:48	Sunny	002027	2.7780	2.7878	11295.71	11296.71	1.00	1.46	1.43	1.44	87	113
2-Feb-12	10:50	Sunny	002066	2.7867	2.7951	11296.71	11297.71	1.00	1.43	1.43	1.43	86	98
8-Feb-12	8:24	Cloudy	002023	2.8015	2.8083	11321.71	11322.71	1.00	1.44	1.44	1.44	87	79
8-Feb-12	9:44	Cloudy	002012	2.7348	2.7422	11322.71	11323.71	1.00	1.44	1.44	1.44	87	86
8-Feb-12	10:52	Cloudy	002014	2.7553	2.7614	11323.71	11324.71	1.00	1.47	1.42	1.44	87	71
14-Feb-12	8:38	Cloudy	002061	2.8219	2.8281	11348.71	11349.71	1.00	1.43	1.43	1.43	86	72
14-Feb-12	9:45	Cloudy	002059	2.7975	2.8051	11349.71	11350.71	1.00	1.40	1.40	1.40	84	90
14-Feb-12	10:48	Cloudy	002057	2.7984	2.8056	11350.71	11351.71	1.00	1.38	1.38	1.38	83	87
20-Feb-12	8:42	Cloudy	002190	2.7394	2.7455	11375.70	11376.70	1.00	1.38	1.43	1.41	84	72
20-Feb-12	9:48	Cloudy	002180	2.7541	2.7598	11376.70	11377.70	1.00	1.43	1.38	1.41	84	68
20-Feb-12	10:51	Cloudy	002178	2.7606	2.7674	11377.70	11378.70	1.00	1.41	1.48	1.44	87	79
25-Feb-12	8:53	Cloudy	002171	2.7717	2.7786	11402.69	11403.69	1.00	1.48	1.48	1.48	89	78
25-Feb-12	9:55	Cloudy	002169	2.7508	2.7594	11403.69	11404.69	1.00	1.45	1.48	1.47	88	98
25-Feb-12	11:00	Cloudy	002167	2.7723	2.7815	11404.69	11405.69	1.00	1.48	1.48	1.48	89	104

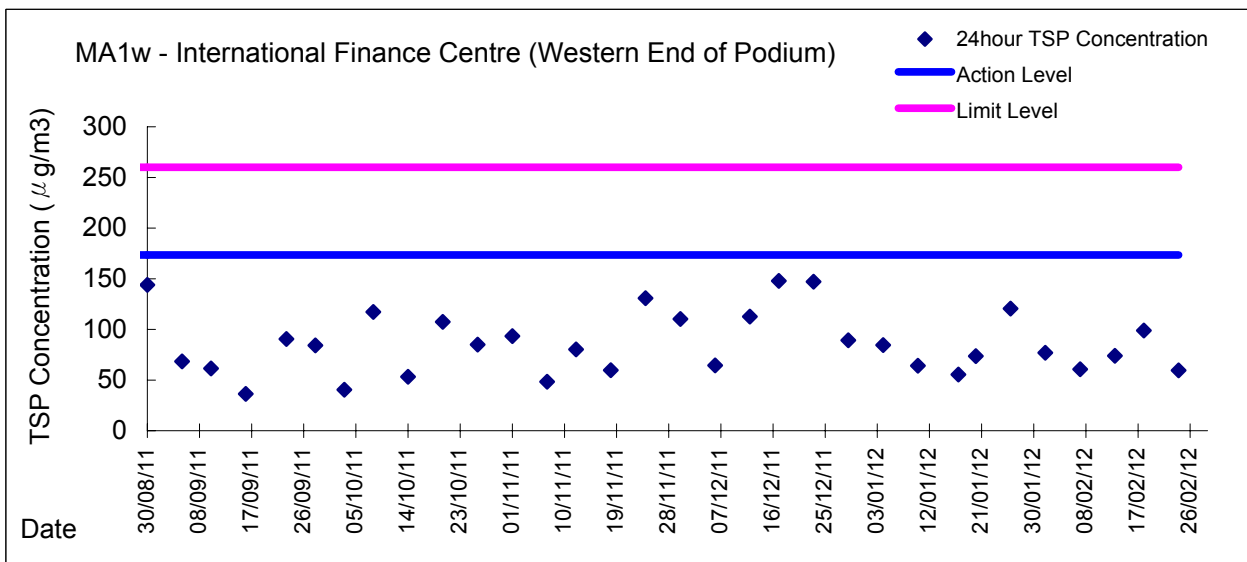
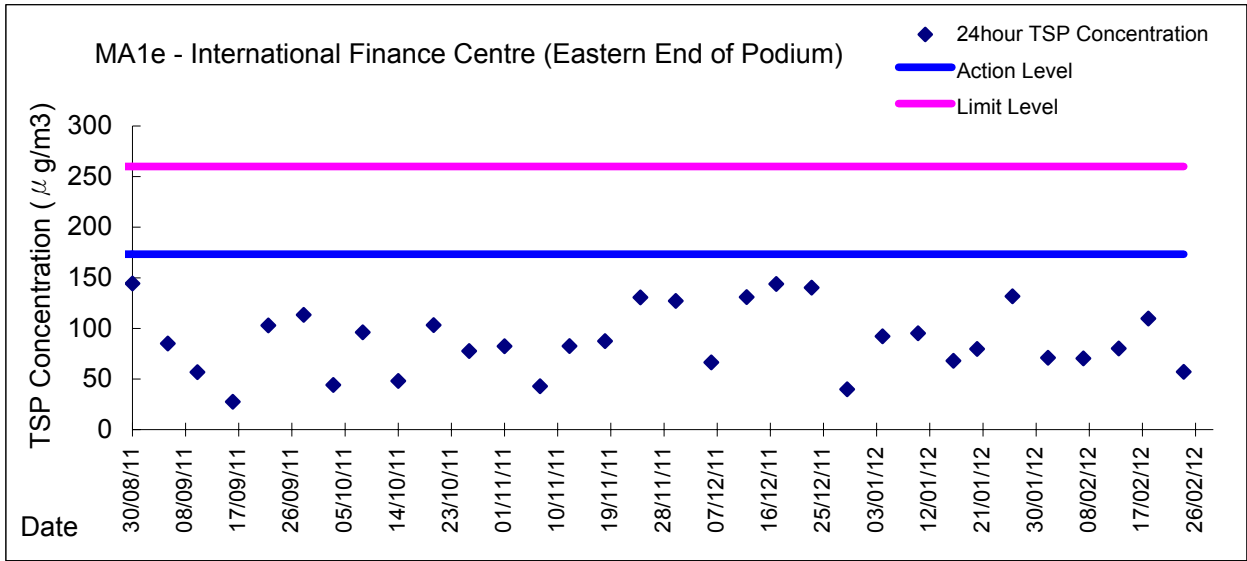
Graphic Presentation of 24 hour TSP Result



Graphic Presentation of 24 hour TSP Result

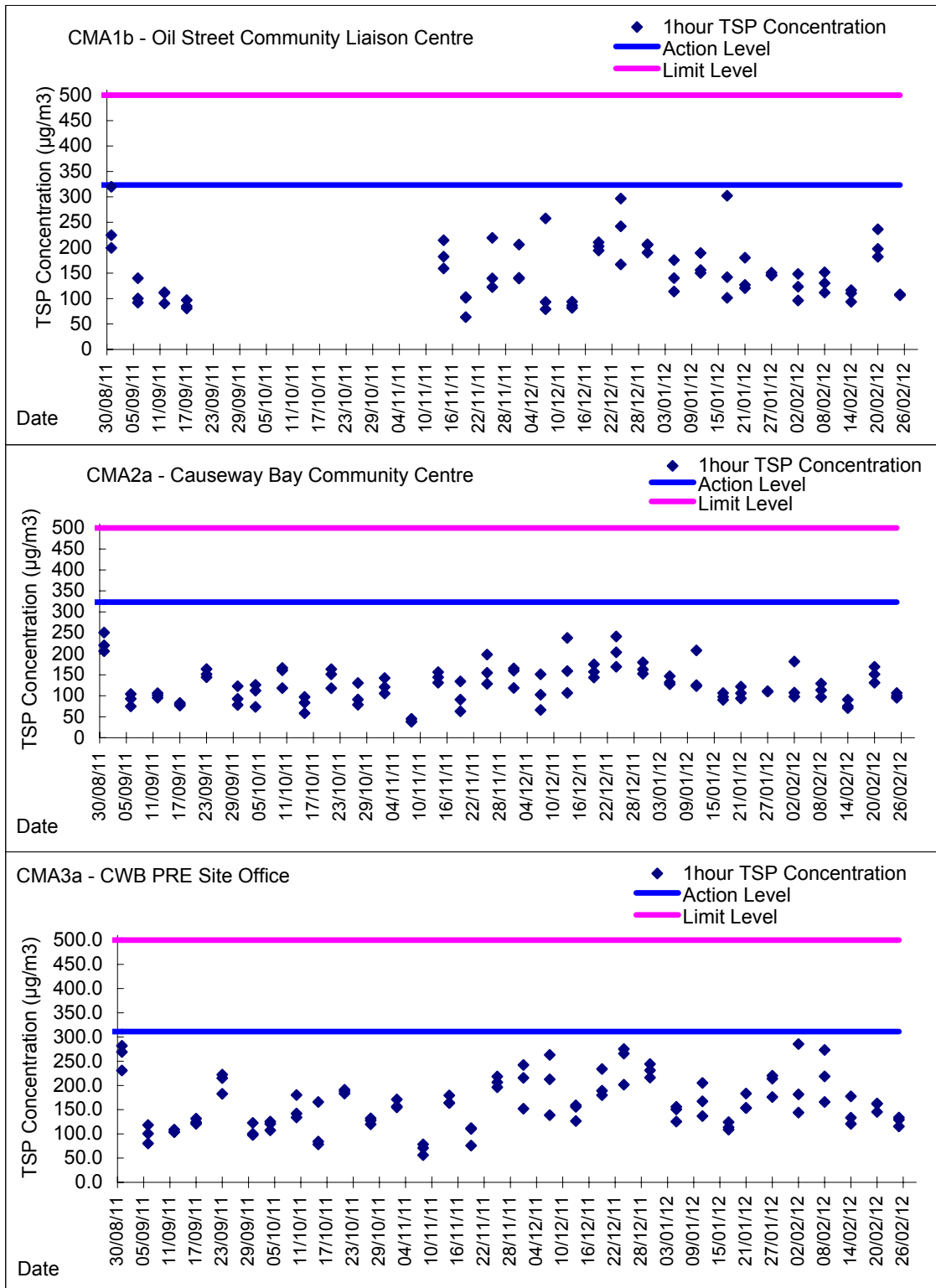


Graphic Presentation of 24 hour TSP Result

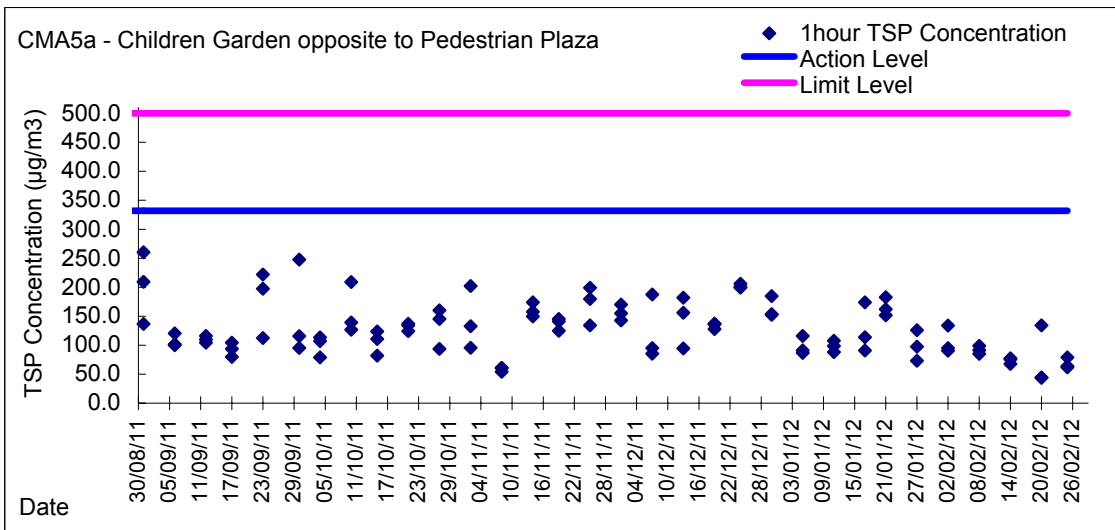
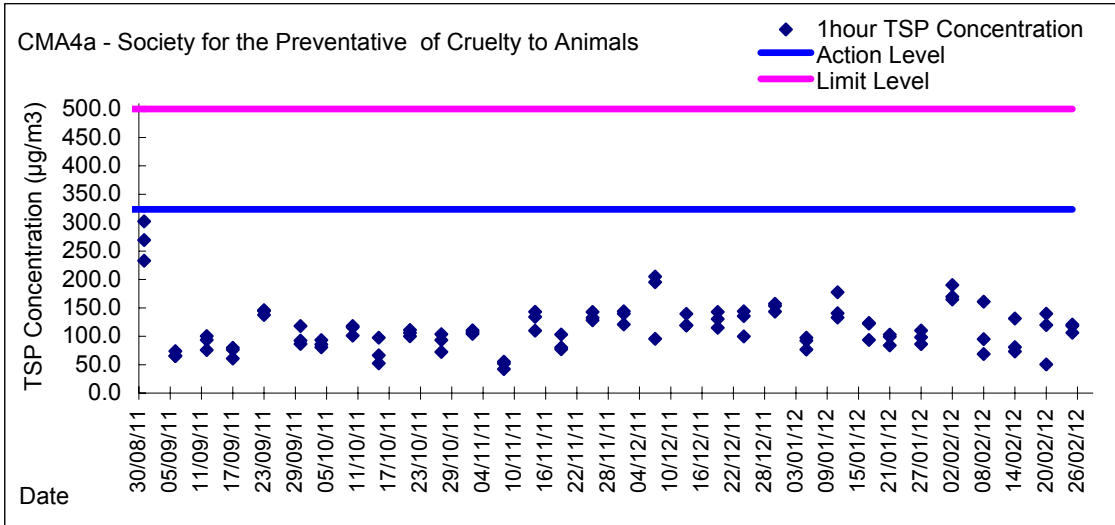




Graphic Presentation of 1 hour TSP Result



Graphic Presentation of 1 hour TSP Result



Graphic Presentation of 1 hour TSP Result

